

Product datasheet for **TA338838**

Pdcl2 Rabbit Polyclonal Antibody

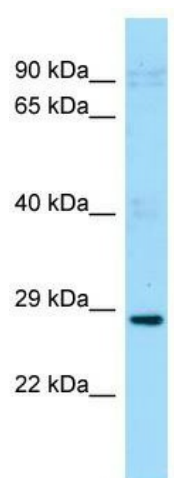
Product data:

Product Type:	Primary Antibodies
Applications:	WB
Recommended Dilution:	WB
Reactivity:	Mouse
Host:	Rabbit
Isotype:	IgG
Clonality:	Polyclonal
Immunogen:	The immunogen for Anti-Pdcl2 antibody is: synthetic peptide directed towards the N-terminal region of Mouse Pdcl2. Synthetic peptide located within the following region: EKRLQEWKALKKKKQKFGELREISGNQYVNEVTNAEKDLWVVIHLYRSSVP
Formulation:	Liquid. Purified antibody supplied in 1x PBS buffer with 0.09% (w/v) sodium azide and 2% sucrose. <i>Note that this product is shipped as lyophilized powder to China customers.</i>
Concentration:	lot specific
Purification:	Protein A purified
Conjugation:	Unconjugated
Storage:	Store at -20°C as received.
Stability:	Stable for 12 months from date of receipt.
Predicted Protein Size:	28 kDa
Gene Name:	phosducin-like 2
Database Link:	NP_075997 Entrez Gene 79455 Mouse Q78Y63
Background:	Pdcl2 may play a role in germ cell maturation.
Synonyms:	GCPHLP
Note:	Immunogen Sequence Homology: Dog: 100%; Rat: 100%; Horse: 100%; Human: 100%; Mouse: 100%; Bovine: 100%; Rabbit: 100%; Pig: 93%



[View online »](#)

Product images:



WB Suggested Anti-Pdcl2 Antibody; Titration: 1.0 ug/ml; Positive Control: Mouse Testis