

Product datasheet for **TA338836**

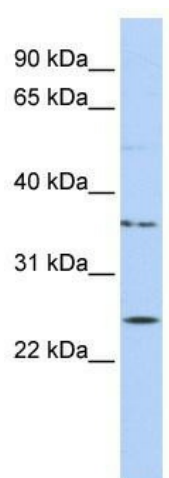
IQCF1 Rabbit Polyclonal Antibody

Product data:

Product Type:	Primary Antibodies
Applications:	WB
Recommended Dilution:	WB
Reactivity:	Human
Host:	Rabbit
Isotype:	IgG
Clonality:	Polyclonal
Immunogen:	The immunogen for anti-IQCF1 antibody: synthetic peptide directed towards the middle region of human IQCF1. Synthetic peptide located within the following region: ATKIKAWWRGTLVRRALLHAALSACIIQCWWRLILSKILKRRQAALFAF
Formulation:	Liquid. Purified antibody supplied in 1x PBS buffer with 0.09% (w/v) sodium azide and 2% sucrose. <i>Note that this product is shipped as lyophilized powder to China customers.</i>
Concentration:	lot specific
Purification:	Protein A purified
Conjugation:	Unconjugated
Storage:	Store at -20°C as received.
Stability:	Stable for 12 months from date of receipt.
Predicted Protein Size:	24 kDa
Gene Name:	IQ motif containing F1
Database Link:	NP_689610 Entrez Gene 132141 Human Q8N6M8
Background:	The exact function of IQCF1 is not known.
Synonyms:	FLJ27508; MGC39725
Note:	Immunogen Sequence Homology: Human: 100%



[View online »](#)

Product images:

WB Suggested Anti-IQCF1 Antibody Titration: 0.2-1 ug/ml; ELISA Titer: 1: 1562500; Positive Control: MCF7 cell lysate