

## Product datasheet for **TA338829**

### C1orf93 (FAM213B) Rabbit Polyclonal Antibody

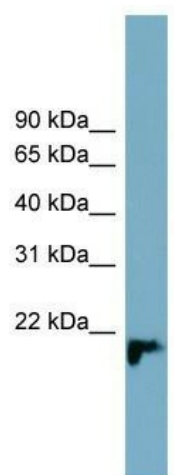
#### Product data:

Product Type:	Primary Antibodies
Applications:	WB
Recommended Dilution:	WB
Reactivity:	Human
Host:	Rabbit
Isotype:	IgG
Clonality:	Polyclonal
Immunogen:	The immunogen for anti-C1orf93 antibody: synthetic peptide directed towards the middle region of human C1orf93. Synthetic peptide located within the following region: RYNLSILPAALGKPV RDVAAKAKAVGIQGNLSGDLLQSGLLVSKGGD
Formulation:	Liquid. Purified antibody supplied in 1x PBS buffer with 0.09% (w/v) sodium azide and 2% sucrose. <i>Note that this product is shipped as lyophilized powder to China customers.</i>
Concentration:	lot specific
Purification:	Protein A purified
Conjugation:	Unconjugated
Storage:	Store at -20°C as received.
Stability:	Stable for 12 months from date of receipt.
Predicted Protein Size:	21 kDa
Gene Name:	family with sequence similarity 213 member B
Database Link:	<a href="#">NP_689584</a> <a href="#">Entrez Gene 127281 Human</a> <a href="#">Q8TBF2</a>
Background:	The function of this protein remains unknown.
Synonyms:	C1orf93
Note:	Immunogen Sequence Homology: Pig: 100%; Rat: 100%; Horse: 100%; Human: 100%; Mouse: 100%; Bovine: 100%; Guinea pig: 100%; Dog: 93%; Zebrafish: 86%



[View online »](#)

## Product images:



WB Suggested Anti-FAM213B Antibody Titration:  
0.2-1 ug/ml; Positive Control: PANC1 cell lysate