

Product datasheet for **TA338828**

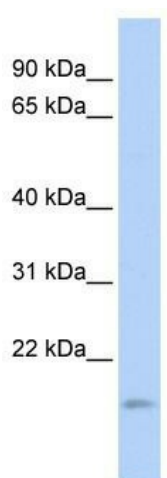
TNFAIP8L1 Rabbit Polyclonal Antibody

Product data:

Product Type:	Primary Antibodies
Applications:	WB
Recommended Dilution:	WB
Reactivity:	Human
Host:	Rabbit
Isotype:	IgG
Clonality:	Polyclonal
Immunogen:	The immunogen for anti-TNFAIP8L1 antibody: synthetic peptide directed towards the middle region of human TNFAIP8L1. Synthetic peptide located within the following region: AKSHGRINHVFGHLADCDFLAALYGPAEYRSHLRRICEGLGRMLDEGSL
Formulation:	Liquid. Purified antibody supplied in 1x PBS buffer with 0.09% (w/v) sodium azide and 2% sucrose.
Concentration:	lot specific
Purification:	Protein A purified
Conjugation:	Unconjugated
Storage:	Store at -20°C as received.
Stability:	Stable for 12 months from date of receipt.
Predicted Protein Size:	21 kDa
Gene Name:	TNF alpha induced protein 8 like 1
Database Link:	NP_689575 Entrez Gene 126282 Human Q8WVP5
Background:	TNFAIP8L1 belongs to the TNFAIP8 family. The exact function of TNFAIP8L is not known.
Synonyms:	TIPE1
Note:	Immunogen Sequence Homology: Dog: 100%; Rat: 100%; Horse: 100%; Human: 100%; Mouse: 93%; Bovine: 93%



[View online »](#)

Product images:

WB Suggested Anti-TNFAIP8L1 Antibody Titration:
0.2-1 ug/ml; ELISA Titer: 1: 62500; Positive
Control: HepG2 cell lysate