

Product datasheet for **TA338827**

KRT222P (KRT222) Rabbit Polyclonal Antibody

Product data:

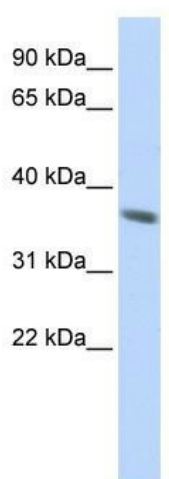
Product Type:	Primary Antibodies
Applications:	WB
Recommended Dilution:	WB
Reactivity:	Human
Host:	Rabbit
Isotype:	IgG
Clonality:	Polyclonal
Immunogen:	The immunogen for anti-KRT222P antibody: synthetic peptide directed towards the N terminal of human KRT222P. Synthetic peptide located within the following region: ELSQLLNEIRANYEKILTRNQIETVLSTRIQLEEDISKMDKDEEALKAA
Formulation:	Liquid. Purified antibody supplied in 1x PBS buffer with 0.09% (w/v) sodium azide and 2% sucrose. <i>Note that this product is shipped as lyophilized powder to China customers.</i>
Concentration:	lot specific
Purification:	Protein A purified
Conjugation:	Unconjugated
Storage:	Store at -20°C as received.
Stability:	Stable for 12 months from date of receipt.
Predicted Protein Size:	34 kDa
Gene Name:	keratin 222
Database Link:	NP_689562 Entrez Gene 125113 Human Q8N1A0
Background:	KRT222 belongs to the intermediate filament family. The exact function of KRT222 is not known.
Synonyms:	KA21; KRT222P



[View online »](#)

Note: Immunogen Sequence Homology: Dog: 100%; Pig: 100%; Rat: 100%; Human: 100%; Mouse: 100%; Bovine: 100%; Rabbit: 100%; Horse: 93%

Product images:



WB Suggested Anti-KRT222 Antibody Titration:
0.2-1 ug/ml; ELISA Titer: 1: 312500; Positive
Control: Jurkat cell lysate