

Product datasheet for **TA338825**

C17orf57 (EFCAB13) Rabbit Polyclonal Antibody

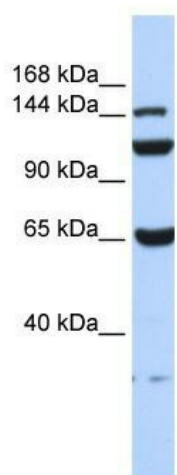
Product data:

Product Type:	Primary Antibodies
Applications:	WB
Recommended Dilution:	WB
Reactivity:	Human
Host:	Rabbit
Isotype:	IgG
Clonality:	Polyclonal
Immunogen:	The immunogen for anti-C17orf57 antibody: synthetic peptide directed towards the N terminal of human C17orf57. Synthetic peptide located within the following region: CGEEKSSDFSGEKKVGRKSLQVQQHSKRTEIIPFLKLSKEKVKTRKENS
Formulation:	Liquid. Purified antibody supplied in 1x PBS buffer with 0.09% (w/v) sodium azide and 2% sucrose. <i>Note that this product is shipped as lyophilized powder to China customers.</i>
Concentration:	lot specific
Purification:	Protein A purified
Conjugation:	Unconjugated
Storage:	Store at -20°C as received.
Stability:	Stable for 12 months from date of receipt.
Predicted Protein Size:	110 kDa
Gene Name:	EF-hand calcium binding domain 13
Database Link:	NP_689560 Entrez Gene 124989 Human Q8IY85
Background:	The exact function of EFCAB13 remains unknown.
Synonyms:	C17orf57
Note:	Immunogen Sequence Homology: Human: 100%; Mouse: 85%; Bovine: 85%; Goat: 82%



[View online »](#)

Product images:



WB Suggested Anti-EFCAB13 Antibody Titration:
0.2-1 ug/ml; ELISA Titer: 1: 1562500; Positive
Control: 293T cell lysate