

## Product datasheet for **TA338823**

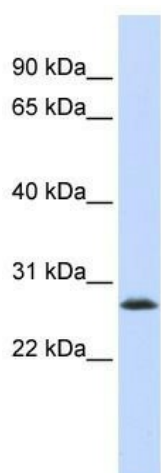
### LSM12 Rabbit Polyclonal Antibody

#### Product data:

Product Type:	Primary Antibodies
Applications:	WB
Recommended Dilution:	WB
Reactivity:	Human
Host:	Rabbit
Isotype:	IgG
Clonality:	Polyclonal
Immunogen:	The immunogen for anti-LSM12 antibody: synthetic peptide directed towards the middle region of human LSM12. Synthetic peptide located within the following region: PPYQVENCKGKEGSALSHVRKIVEKHFRDVESQKILQRSQAQQPQKEAAL
Formulation:	Liquid. Purified antibody supplied in 1x PBS buffer with 0.09% (w/v) sodium azide and 2% sucrose. <i>Note that this product is shipped as lyophilized powder to China customers.</i>
Concentration:	lot specific
Purification:	Protein A purified
Conjugation:	Unconjugated
Storage:	Store at -20°C as received.
Stability:	Stable for 12 months from date of receipt.
Predicted Protein Size:	22 kDa
Gene Name:	LSM12 homolog
Database Link:	<a href="#">NP_689557</a> <a href="#">Entrez Gene 124801 Human</a> <a href="#">Q3MHD2</a>
Background:	LSM12 belongs to the LSM12 family. The exact function of LSM12 is not known.
Synonyms:	PNAS-135
Note:	Immunogen Sequence Homology: Dog: 100%; Pig: 100%; Rat: 100%; Horse: 100%; Human: 100%; Mouse: 100%; Bovine: 100%; Rabbit: 100%; Guinea pig: 93%; Zebrafish: 79%



[View online »](#)

**Product images:**

WB Suggested Anti-LSM12 Antibody Titration: 0.2-1 ug/ml; ELISA Titer: 1: 62500; Positive Control: 293T cell lysate LSM12 is strongly supported by BioGPS gene expression data to be expressed in Human HEK293T cells