

Product datasheet for TA338820

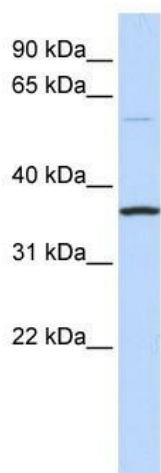
C16orf46 Rabbit Polyclonal Antibody

Product data:

Product Type:	Primary Antibodies
Applications:	WB
Recommended Dilution:	WB
Reactivity:	Human
Host:	Rabbit
Isotype:	IgG
Clonality:	Polyclonal
Immunogen:	The immunogen for anti-C16orf46 antibody: synthetic peptide directed towards the N terminal of human C16orf46. Synthetic peptide located within the following region: LSHWSLQTKPTEGGPEKQSSPSQTQAAPQGPSTASRAISDICFPTYFR
Formulation:	Liquid. Purified antibody supplied in 1x PBS buffer with 0.09% (w/v) sodium azide and 2% sucrose.
Concentration:	lot specific
Purification:	Protein A purified
Conjugation:	Unconjugated
Storage:	Store at -20°C as received.
Stability:	Stable for 12 months from date of receipt.
Predicted Protein Size:	43 kDa
Gene Name:	chromosome 16 open reading frame 46
Database Link:	NP_689550 Entrez Gene 123775 Human Q6P387
Background:	The exact function of C16orf46 remains unknown.
Synonyms:	FLJ32702
Note:	Immunogen Sequence Homology: Human: 100%


[View online »](#)

Product images:



WB Suggested Anti-C16orf46 Antibody Titration:
0.2-1 ug/ml; ELISA Titer: 1: 1562500; Positive
Control: Human brain