

Product datasheet for **TA338818**

C15ORF27 (TMEM266) Rabbit Polyclonal Antibody

Product data:

Product Type:	Primary Antibodies
Applications:	WB
Recommended Dilution:	WB
Reactivity:	Human
Host:	Rabbit
Isotype:	IgG
Clonality:	Polyclonal
Immunogen:	The immunogen for anti-C15orf27 antibody: synthetic peptide directed towards the middle region of human C15orf27. Synthetic peptide located within the following region: EMEMVIQQYEKAKVIQDEQLERLTQICQEQGFIRQLRAHLAQQDLDLAA
Formulation:	Liquid. Purified antibody supplied in 1x PBS buffer with 0.09% (w/v) sodium azide and 2% sucrose. <i>Note that this product is shipped as lyophilized powder to China customers.</i>
Concentration:	lot specific
Purification:	Protein A purified
Conjugation:	Unconjugated
Storage:	Store at -20°C as received.
Stability:	Stable for 12 months from date of receipt.
Predicted Protein Size:	39 kDa
Gene Name:	transmembrane protein 266
Database Link:	NP_689548 Entrez Gene 123591 Human Q2M3C6
Background:	C15orf27 is a multi-pass membrane protein. The exact function of C15orf27 remains unknown.
Synonyms:	C15orf27; HVRP1

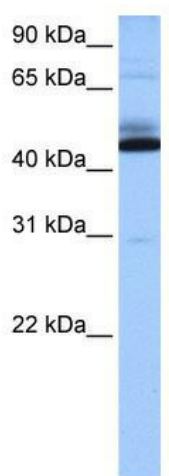


[View online »](#)

Note: Immunogen Sequence Homology: Pig: 100%; Rat: 100%; Horse: 100%; Human: 100%; Mouse: 100%; Bovine: 100%; Rabbit: 100%; Guinea pig: 100%; Zebrafish: 92%; Goat: 90%

Protein Families: Druggable Genome, Transmembrane

Product images:



WB Suggested Anti-C15orf27 Antibody Titration:
0.2-1 ug/ml; Positive Control: Human heart