

Product datasheet for **TA338816**

Frmd6 Rabbit Polyclonal Antibody

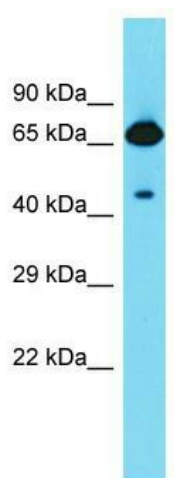
Product data:

Product Type:	Primary Antibodies
Applications:	WB
Recommended Dilution:	WB
Reactivity:	Rat
Host:	Rabbit
Isotype:	IgG
Clonality:	Polyclonal
Immunogen:	The immunogen for Anti-Frmd6 antibody is: synthetic peptide directed towards the C-terminal region of Rat Frmd6. Synthetic peptide located within the following region: PQTICRPKTSTDRHSLSLDDIRLYQKDFLRIAGLCQDTAQS YTFGCGHE
Formulation:	Liquid. Purified antibody supplied in 1x PBS buffer with 0.09% (w/v) sodium azide and 2% sucrose.
Concentration:	lot specific
Purification:	Protein A purified
Conjugation:	Unconjugated
Storage:	Store at -20°C as received.
Stability:	Stable for 12 months from date of receipt.
Predicted Protein Size:	71 kDa
Gene Name:	FERM domain containing 6
Database Link:	NP_001257983 Entrez Gene 257646 Rat
Background:	Frmd6 is a putative structural protein; presence of FERM domain suggests it may be a member of the ezrin-radixin-moesin (ERM) protein family
Synonyms:	C14orf31; c14_5320; EX1; MGC17921; Willin
Note:	Immunogen Sequence Homology: Dog: 100%; Pig: 100%; Rat: 100%; Human: 100%; Mouse: 100%; Bovine: 100%; Rabbit: 100%; Guinea pig: 100%; Horse: 92%



[View online »](#)

Product images:



Host: Rabbit; Target Name: Frmd6; Sample
Tissue: Rat Stomach lysates; Antibody Dilution:
1.0 ug/ml