

## Product datasheet for **TA338814**

### **C11ORF46 (ARL14EP) Rabbit Polyclonal Antibody**

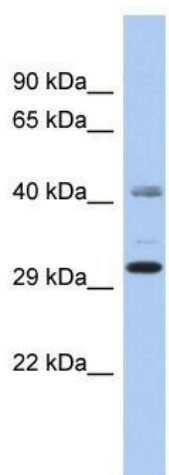
#### **Product data:**

<b>Product Type:</b>	Primary Antibodies
<b>Applications:</b>	WB
<b>Recommended Dilution:</b>	WB
<b>Reactivity:</b>	Human
<b>Host:</b>	Rabbit
<b>Isotype:</b>	IgG
<b>Clonality:</b>	Polyclonal
<b>Immunogen:</b>	The immunogen for anti-C11orf46 antibody: synthetic peptide directed towards the N terminal of human C11orf46. Synthetic peptide located within the following region: SSNDMLLLQLRTGMTLSGNNTICFHHVKIYIDRFEDLQKSCCDPFNIHKK
<b>Formulation:</b>	Liquid. Purified antibody supplied in 1x PBS buffer with 0.09% (w/v) sodium azide and 2% sucrose. <i>Note that this product is shipped as lyophilized powder to China customers.</i>
<b>Concentration:</b>	lot specific
<b>Purification:</b>	Protein A purified
<b>Conjugation:</b>	Unconjugated
<b>Storage:</b>	Store at -20°C as received.
<b>Stability:</b>	Stable for 12 months from date of receipt.
<b>Predicted Protein Size:</b>	29 kDa
<b>Gene Name:</b>	ADP ribosylation factor like GTPase 14 effector protein
<b>Database Link:</b>	<a href="#">NP_689529</a> <a href="#">Entrez Gene 120534 Human</a> <a href="#">Q8N8R7</a>
<b>Background:</b>	The specific function of this protein remains unknown.
<b>Synonyms:</b>	ARF7EP; C11orf46; dj299F11.1
<b>Note:</b>	Immunogen Sequence Homology: Pig: 100%; Rat: 100%; Human: 100%; Mouse: 100%; Rabbit: 100%; Guinea pig: 100%; Dog: 93%; Horse: 93%; Bovine: 86%



[View online »](#)

## Product images:



WB Suggested Anti-ARL14EP Antibody Titration:  
0.2-1 ug/ml; ELISA Titer: 1: 1562500; Positive  
Control: OVCAR-3 cell lysate