

## Product datasheet for **TA338813**

### OTOS Rabbit Polyclonal Antibody

#### Product data:

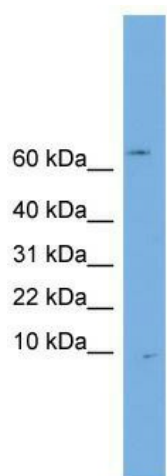
|                         |   |
|-------------------------|---|
| Product Type:           | Primary Antibodies  |
| Applications:           | WB  |
| Recommended Dilution:   | WB  |
| Reactivity:             | Human   |
| Host:                   | Rabbit  |
| Isotype:                | IgG   |
| Clonality:              | Polyclonal  |
| Immunogen:              | The immunogen for anti-OTOS antibody: synthetic peptide directed towards the N terminal of human OTOS. Synthetic peptide located within the following region:<br>MQACMVPGLALCLLLGPLAGAKPVQEEGDPYAELPAMPYWPFSTSDFWNY |
| Formulation:            | Liquid. Purified antibody supplied in 1x PBS buffer with 0.09% (w/v) sodium azide and 2% sucrose.<br><i>Note that this product is shipped as lyophilized powder to China customers.</i>                             |
| Concentration:          | lot specific  |
| Purification:           | Protein A purified  |
| Conjugation:            | Unconjugated  |
| Storage:                | Store at -20°C as received.   |
| Stability:              | Stable for 12 months from date of receipt.  |
| Predicted Protein Size: | 10 kDa  |
| Gene Name:              | otospiralin   |
| Database Link:          | <a href="#">NP_683764</a><br><a href="#">Entrez Gene 150677 Human</a><br><a href="#">Q8NHW6</a>   |
| Background:             | OTOS may be essential for the survival of the neurosensory epithelium of the inner ear.   |
| Synonyms:               | OTOSP   |
| Note:                   | Immunogen Sequence Homology: Human: 100%; Dog: 93%; Rat: 93%; Horse: 93%; Bovine: 93%; Pig: 79%   |



[View online »](#)

Protein Families: Secreted Protein

### Product images:



WB Suggested Anti-OTOS Antibody Titration: 0.2-1 ug/ml; Positive Control: Jurkat cell lysate