

Product datasheet for **TA338812**

HUS1B Rabbit Polyclonal Antibody

Product data:

Product Type:	Primary Antibodies
Applications:	WB
Recommended Dilution:	WB
Reactivity:	Human
Host:	Rabbit
Isotype:	IgG
Clonality:	Polyclonal
Immunogen:	The immunogen for anti-HUS1B antibody: synthetic peptide directed towards the N terminal of human HUS1B. Synthetic peptide located within the following region: ELFIHVSGTVARLAKVCVLRVRPDSLFCGPAGSGGLHEARLWCEVRQGAF
Formulation:	Liquid. Purified antibody supplied in 1x PBS buffer with 0.09% (w/v) sodium azide and 2% sucrose.
Concentration:	lot specific
Purification:	Protein A purified
Conjugation:	Unconjugated
Storage:	Store at -20°C as received.
Stability:	Stable for 12 months from date of receipt.
Predicted Protein Size:	31 kDa
Gene Name:	HUS1 checkpoint clamp component B
Database Link:	NP_683762 Entrez Gene 135458 Human Q8NHY5



[View online »](#)

Background:

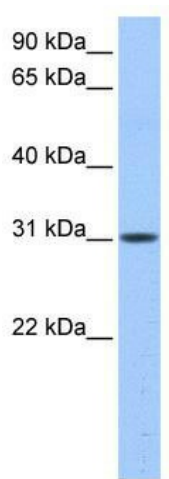
HUS1B is most closely related to HUS1, a component of a cell cycle checkpoint protein complex involved in cell cycle arrest in response to DNA damage. HUS1B can interact with the check point protein RAD1 but not with RAD9. Overexpression of HUS1B has been shown to induce cell death, which suggests a related but distinct role of this protein, as compared to the HUS1. The protein encoded by this gene is most closely related to HUS1, a component of a cell cycle checkpoint protein complex involved in cell cycle arrest in response to DNA damage. This protein can interact with the check point protein RAD1 but not with RAD9. Overexpression of this protein has been shown to induce cell death, which suggests a related but distinct role of this protein, as compared to the HUS1.

Synonyms:

RP11-532F6.1

Note:

Immunogen Sequence Homology: Human: 100%

Product images:


WB Suggested Anti-HUS1B Antibody Titration:
0.2-1 ug/ml; Positive Control: Human Liver