

Product datasheet for **TA338811**

TIRAP Rabbit Polyclonal Antibody

Product data:

Product Type:	Primary Antibodies
Applications:	WB
Recommended Dilution:	WB
Reactivity:	Human
Host:	Rabbit
Isotype:	IgG
Clonality:	Polyclonal
Immunogen:	The immunogen for anti-TIRAP antibody: synthetic peptide directed towards the middle region of human TIRAP. Synthetic peptide located within the following region: LEGSTASLRCLQLRDATPGGAIVSELCQALSSSHCRVLLITPGFLQDPW
Formulation:	Liquid. Purified antibody supplied in 1x PBS buffer with 0.09% (w/v) sodium azide and 2% sucrose. <i>Note that this product is shipped as lyophilized powder to China customers.</i>
Concentration:	lot specific
Purification:	Protein A purified
Conjugation:	Unconjugated
Storage:	Store at -20°C as received.
Stability:	Stable for 12 months from date of receipt.
Predicted Protein Size:	25 kDa
Gene Name:	toll-interleukin 1 receptor (TIR) domain containing adaptor protein
Database Link:	NP_683708 Entrez Gene 114609 Human P58753
Background:	The innate immune system recognizes microbial pathogens through Toll-like receptors (TLRs), which identify pathogen-associated molecular patterns. Different TLRs recognize different pathogen-associated molecular patterns and all TLRs have a Toll-interleuk
Synonyms:	BACTS1; Mal; MyD88-2; wyatt



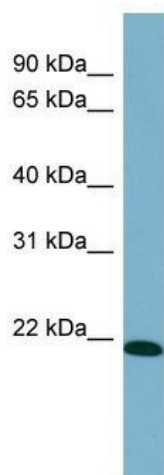
[View online »](#)

Note: Immunogen Sequence Homology: Pig: 100%; Rat: 100%; Horse: 100%; Human: 100%; Bovine: 100%; Dog: 93%; Mouse: 93%; Rabbit: 93%; Guinea pig: 93%

Protein Families: Druggable Genome

Protein Pathways: Toll-like receptor signaling pathway

Product images:



WB Suggested Anti-TIRAP Antibody Titration: 0.2-1 ug/ml; ELISA Titer: 1: 312500; Positive Control: Human Placenta