

Product datasheet for **TA338803**

CACNB2 Rabbit Polyclonal Antibody

Product data:

Product Type:	Primary Antibodies
Applications:	WB
Recommended Dilution:	WB
Reactivity:	Rat
Host:	Rabbit
Isotype:	IgG
Clonality:	Polyclonal
Immunogen:	The immunogen for Anti-Cacnb2 antibody is: synthetic peptide directed towards the middle region of Rat Cacnb2. Synthetic peptide located within the following region: DFLKHRFEGRISITRVTADISLAKRSVLNPNPSKHAIERSNTRSSLAEVQ
Formulation:	Liquid. Purified antibody supplied in 1x PBS buffer with 0.09% (w/v) sodium azide and 2% sucrose. <i>Note that this product is shipped as lyophilized powder to China customers.</i>
Concentration:	lot specific
Purification:	Protein A purified
Conjugation:	Unconjugated
Storage:	Store at -20°C as received.
Stability:	Stable for 12 months from date of receipt.
Predicted Protein Size:	66 kDa
Gene Name:	calcium voltage-gated channel auxiliary subunit beta 2
Database Link:	NP_963865 Entrez Gene 116600 Rat Q08289
Background:	auxillary subunit of the L-type Ca(2+) channel [RGD, Feb 2006]. Publication Note: This RefSeq record includes a subset of the publications that are available for this gene. Please see the Gene record to access additional publications. ##Evidence-Data-START## Transcript exon combination :: M80545.1 [ECO:0000332] ##Evidence-Data-END##
Synonyms:	CACNLB2; CAVB2; MYSB



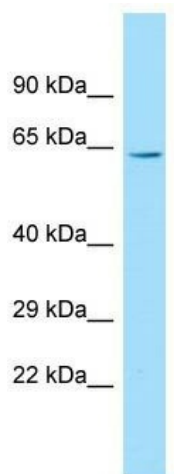
[View online »](#)

Note: Immunogen Sequence Homology: Dog: 100%; Pig: 100%; Rat: 100%; Horse: 100%; Human: 100%; Mouse: 100%; Bovine: 100%; Rabbit: 100%; Guinea pig: 100%; Zebrafish: 93%

Protein Families: Druggable Genome, Ion Channels: Other

Protein Pathways: Arrhythmogenic right ventricular cardiomyopathy (ARVC), Cardiac muscle contraction, Dilated cardiomyopathy, Hypertrophic cardiomyopathy (HCM), MAPK signaling pathway

Product images:



Host: Rabbit; Target Name: Cacnb2; Sample Tissue: Rat Thymus lysates; Antibody Dilution: 1.0 ug/ml