

Product datasheet for **TA338799**

TPTE Rabbit Polyclonal Antibody

Product data:

Product Type:	Primary Antibodies
Applications:	WB
Recommended Dilution:	WB
Reactivity:	Human
Host:	Rabbit
Isotype:	IgG
Clonality:	Polyclonal
Immunogen:	The immunogen for anti-TPTE antibody: synthetic peptide directed towards the middle region of human TPTE. Synthetic peptide located within the following region: IQIEMEKVVVFSTISLGKCSVLDNITTDKILIDVFDGLPLYDDVKVQFFY
Formulation:	Liquid. Purified antibody supplied in 1x PBS buffer with 0.09% (w/v) sodium azide and 2% sucrose. <i>Note that this product is shipped as lyophilized powder to China customers.</i>
Concentration:	lot specific
Purification:	Protein A purified
Conjugation:	Unconjugated
Storage:	Store at -20°C as received.
Stability:	Stable for 12 months from date of receipt.
Predicted Protein Size:	60 kDa
Gene Name:	transmembrane phosphatase with tensin homology
Database Link:	NP_954869 Entrez Gene 7179 Human P56180
Background:	This gene encodes a PTEN-related tyrosine phosphatase which may play a role in the signal transduction pathways of the endocrine or spermatogenic function of the testis. Alternative splicing results in multiple transcript variants. [provided by RefSeq, Mar 2014]
Synonyms:	CT44; PTEN2

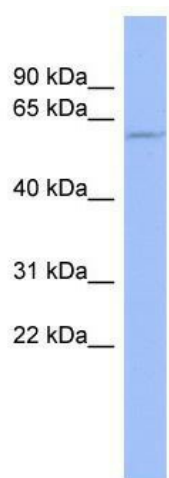


[View online »](#)

Note: Immunogen Sequence Homology: Human: 100%

Protein Families: Druggable Genome, Transmembrane

Product images:



WB Suggested Anti-TPTE Antibody Titration: 0.2-1 ug/ml; ELISA Titer: 1:12500; Positive Control: PANC1 cell lysate