

Product datasheet for **TA338796**

SCN1B Rabbit Polyclonal Antibody

Product data:

Product Type:	Primary Antibodies
Applications:	WB
Recommended Dilution:	WB
Reactivity:	Rat
Host:	Rabbit
Isotype:	IgG
Clonality:	Polyclonal
Immunogen:	The immunogen for Anti-Scn1b antibody is: synthetic peptide directed towards the N-terminal region of Rat Scn1b. Synthetic peptide located within the following region: TFRQKGTEEFVKILRYENEVLQLEEDERFEGRVVWNGSRGTDKDLQDLSIF
Formulation:	Liquid. Purified antibody supplied in 1x PBS buffer with 0.09% (w/v) sodium azide and 2% sucrose. <i>Note that this product is shipped as lyophilized powder to China customers.</i>
Concentration:	lot specific
Purification:	Protein A purified
Conjugation:	Unconjugated
Storage:	Store at -20°C as received.
Stability:	Stable for 12 months from date of receipt.
Predicted Protein Size:	23 kDa
Gene Name:	sodium voltage-gated channel beta subunit 1
Database Link:	NP_001028 Entrez Gene 29686 Rat Q07699



[View online »](#)

Background:

has voltage sensitive sodium channel activity when coexpressed with alpha subunits; plays a role in initiation and propagation of the action potential [RGD, Feb 2006]. Transcript Variant: This variant (2) lacks an internal segment in the 3' UTR, compared to variant 1. Both variants 1 and 2 encode the same isoform (1). Publication Note: This RefSeq record includes a subset of the publications that are available for this gene. Please see the Gene record to access additional publications. ##Evidence-Data-START## RNAseq introns :: single sample supports all introns ERS160565, ERS240718 [ECO:0000348] ##Evidence-Data-END## ##RefSeq-Attributes-START## CDS uses downstream in-frame AUG :: upstream AUG and CDS extension is not conserved ##RefSeq-Attributes-END##

Synonyms:

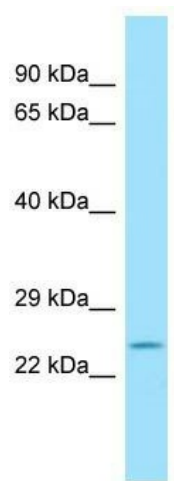
ATFB13; BRGDA5; GEFSP1

Note:

Immunogen Sequence Homology: Dog: 100%; Pig: 100%; Rat: 100%; Human: 100%; Mouse: 100%; Bovine: 100%; Rabbit: 100%; Guinea pig: 100%; Horse: 93%

Protein Families:

Druggable Genome, Ion Channels: Sodium, Transmembrane

Product images:

WB Suggested Anti-Scn1b Antibody; Titration: 1.0 ug/ml; Positive Control: Rat Thymus