

Product datasheet for **TA338793**

KCTD4 Rabbit Polyclonal Antibody

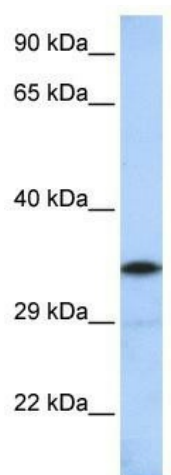
Product data:

Product Type:	Primary Antibodies
Applications:	WB
Recommended Dilution:	WB
Reactivity:	Human
Host:	Rabbit
Isotype:	IgG
Clonality:	Polyclonal
Immunogen:	The immunogen for anti-KCTD4 antibody: synthetic peptide directed towards the middle region of human KCTD4. Synthetic peptide located within the following region: EITDNHDRSQGLRIFCNAPDFISKIKSRIVLVSKSRLDGFPEEFSISSNI
Formulation:	Liquid. Purified antibody supplied in 1x PBS buffer with 0.09% (w/v) sodium azide and 2% sucrose.
Concentration:	lot specific
Purification:	Protein A purified
Conjugation:	Unconjugated
Storage:	Store at -20°C as received.
Stability:	Stable for 12 months from date of receipt.
Predicted Protein Size:	30 kDa
Gene Name:	potassium channel tetramerization domain containing 4
Database Link:	NP_940686 Entrez Gene 386618 Human Q8WVF5
Background:	KCTD4 contains 1 BTB (POZ) domain. The exact function of KCTD4 remains unknown.
Synonyms:	bA321C24.3
Note:	Immunogen Sequence Homology: Dog: 100%; Pig: 100%; Horse: 100%; Human: 100%; Bovine: 100%; Zebrafish: 100%; Guinea pig: 100%; Rat: 93%; Mouse: 93%; Rabbit: 93%



[View online »](#)

Product images:



WB Suggested Anti-KCTD4 Antibody Titration: 0.2-1 ug/ml; ELISA Titer: 1:312500; Positive Control: MCF7 cell lysate