

Product datasheet for **TA338791**

Nav1.5 (SCN5A) Rabbit Polyclonal Antibody

Product data:

Product Type:	Primary Antibodies
Applications:	WB
Recommended Dilution:	WB
Reactivity:	Human
Host:	Rabbit
Isotype:	IgG
Clonality:	Polyclonal
Immunogen:	The immunogen for anti-SCN5A antibody: synthetic peptide directed towards the C terminal of human SCN5A. Synthetic peptide located within the following region: FTKRVLGESGEMDALKIQMEEKFMAANPSKISYEPITTTLRKHEEVSAM
Formulation:	Liquid. Purified antibody supplied in 1x PBS buffer with 0.09% (w/v) sodium azide and 2% sucrose. <i>Note that this product is shipped as lyophilized powder to China customers.</i>
Concentration:	lot specific
Purification:	Protein A purified
Conjugation:	Unconjugated
Storage:	Store at -20°C as received.
Stability:	Stable for 12 months from date of receipt.
Predicted Protein Size:	222 kDa
Gene Name:	sodium voltage-gated channel alpha subunit 5
Database Link:	NP_000326 Entrez Gene 6331 Human Q14524



[View online »](#)

Background:

The protein encoded by this gene is an integral membrane protein and tetrodotoxin-resistant voltage-gated sodium channel subunit. This protein is found primarily in cardiac muscle and is responsible for the initial upstroke of the action potential in an electrocardiogram. Defects in this gene are a cause of long QT syndrome type 3 (LQT3), an autosomal dominant cardiac disease. Alternative splicing results in several transcript variants encoding different isoforms. [provided by RefSeq, Jul 2008]

Synonyms:

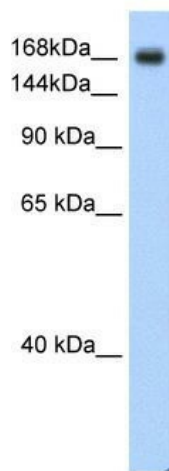
CDCD2; CMD1E; CMPD2; HB1; HB2; HBBD; HH1; ICCD; IVF; LQT3; Nav1.5; PFHB1; SSS1; VF1

Note:

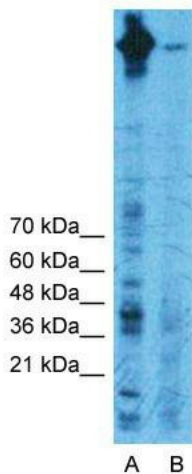
Immunogen Sequence Homology: Dog: 100%; Pig: 100%; Rat: 100%; Horse: 100%; Human: 100%; Mouse: 100%; Bovine: 100%; Rabbit: 100%; Zebrafish: 100%; Guinea pig: 100%

Protein Families:

Druggable Genome, Ion Channels: Sodium, Transmembrane

Product images:


WB Suggested Anti-SCN5A Antibody Titration: 0.2-1 ug/ml; ELISA Titer: 1:312500; Positive Control: SW620 cell lysate SCN5A is supported by BioGPS gene expression data to be expressed in SW620


Anti-SCN5A Western Blot & Peptide Block Validation

Lysate: MCF7 Cell

Lane A: Primary Antibody
Lane B: Primary Antibody + Blocking Peptide

Primary Antibody Concentration: 1.0µg/ml
Peptide Concentration: 5.0µg/ml
Lysate Quantity: 25µg/lane
Gel Concentration: 12%

Host: Rabbit; Target Name: SCN5A; Sample Tissue: MCF7 Whole Cell; Lane A: Primary Antibody; Lane B: Primary Antibody + Blocking Peptide ; Primary Antibody Concentration: 1 ug/ml; Peptide Concentration: 5ug/ml; Lysate Quantity: 25ug/lane/Lane; Gel Concentration: 12%