

## Product datasheet for **TA338788**

### NUDT9 Rabbit Polyclonal Antibody

#### Product data:

Product Type:	Primary Antibodies
Applications:	IHC, WB
Recommended Dilution:	WB, IHC
Reactivity:	Human
Host:	Rabbit
Isotype:	IgG
Clonality:	Polyclonal
Immunogen:	The immunogen for anti-NUDT9 antibody: synthetic peptide directed towards the C terminal of human NUDT9. Synthetic peptide located within the following region: LEAGDDAGKVKWVDINDKCLKLYASHSQFIKLVAEKRDHAWSEDSEADCHA
Formulation:	Liquid. Purified antibody supplied in 1x PBS buffer with 0.09% (w/v) sodium azide and 2% sucrose. <i>Note that this product is shipped as lyophilized powder to China customers.</i>
Concentration:	lot specific
Purification:	Protein A purified
Conjugation:	Unconjugated
Storage:	Store at -20°C as received.
Stability:	Stable for 12 months from date of receipt.
Predicted Protein Size:	33 kDa
Gene Name:	nudix hydrolase 9
Database Link:	<a href="#">NP_932155</a> <a href="#">Entrez Gene 53343 Human</a> <a href="#">Q9BW91</a>

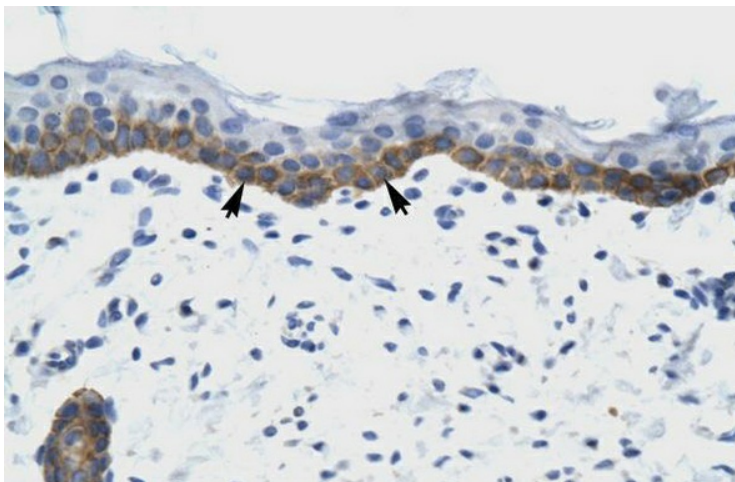


[View online »](#)

- Background:** The protein encoded by this gene belongs to the Nudix hydrolase family. Nudix boxes are found in a family of diverse enzymes that catalyze the hydrolysis of nucleoside diphosphate derivatives. This enzyme is an ADP-ribose pyrophosphatase that catalyzes the hydrolysis of ADP-ribose to AMP and ribose-5-P. It requires divalent metal ions and an intact Nudix motif for enzymatic activity. Alternatively spliced transcript variants encoding different isoforms have been found for this gene. [provided by RefSeq, Oct 2011]
- Synonyms:** NUDT10
- Note:** Immunogen Sequence Homology: Dog: 100%; Pig: 100%; Rat: 100%; Horse: 100%; Human: 100%; Mouse: 100%; Rabbit: 100%; Sheep: 86%; Bovine: 86%; Guinea pig: 86%; Zebrafish: 77%
- Protein Families:** Druggable Genome, Ion Channels: Other
- Protein Pathways:** Purine metabolism

**Product images:**

WB Suggested Anti-NUDT9 Antibody Titration:  
0.2-1 ug/ml; ELISA Titer: 1:62500; Positive Control:  
Jurkat cell lysate



Human Skin