

Product datasheet for **TA338785**

5HT3E (HTR3E) Rabbit Polyclonal Antibody

Product data:

Product Type:	Primary Antibodies
Applications:	IF, WB
Recommended Dilution:	WB, IF
Reactivity:	Human, Mouse
Host:	Rabbit
Isotype:	IgG
Clonality:	Polyclonal
Immunogen:	The immunogen for anti-HTR3E antibody: synthetic peptide directed towards the middle region of human HTR3E. Synthetic peptide located within the following region: RWLHSLLLHCNSPGRCCPTAPQKENKGPGLTPHLPVKEPEVSAGQMPG
Formulation:	Liquid. Purified antibody supplied in 1x PBS buffer with 0.09% (w/v) sodium azide and 2% sucrose. <i>Note that this product is shipped as lyophilized powder to China customers.</i>
Concentration:	lot specific
Purification:	Protein A purified
Conjugation:	Unconjugated
Storage:	Store at -20°C as received.
Stability:	Stable for 12 months from date of receipt.
Predicted Protein Size:	53 kDa
Gene Name:	5-hydroxytryptamine receptor 3E
Database Link:	NP_872395 Entrez Gene 285242 Human A5X5Y0
Background:	This locus encodes a 5-hydroxytryptamine (serotonin) receptor subunit. The encoded protein, subunit E, may play a role in neurotransmission in myenteric neurons. Genes encoding subunits C, D and E form a cluster on chromosome 3. Alternatively spliced transcript variants encoding distinct isoforms have been described. [provided by RefSeq, Feb 2012]
Synonyms:	5-HT3-E; 5-HT3c1; 5-HT3E

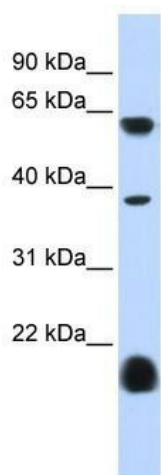


[View online »](#)

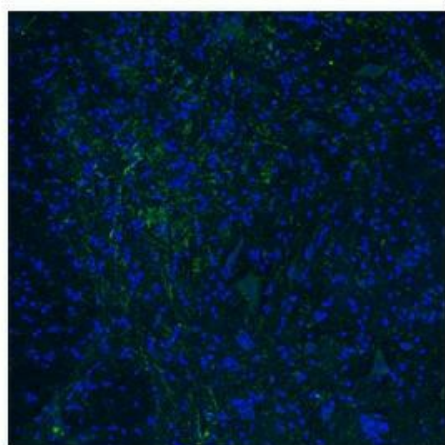
Note: Immunogen Sequence Homology: Dog: 100%; Human: 100%; Horse: 83%; Rabbit: 83%

Protein Families: Druggable Genome, Ion Channels: Cys-loop Receptors, Transmembrane

Product images:



WB Suggested Anti-HTR3E Antibody Titration: 0.2-1 ug/ml; ELISA Titer: 1:312500; Positive Control: Human heart



Immunofluorescence -- Dilution: 1.3ug/mL