

Product datasheet for **TA338783**

KCNMB2 Rabbit Polyclonal Antibody

Product data:

Product Type:	Primary Antibodies
Applications:	WB
Recommended Dilution:	WB
Reactivity:	Human
Host:	Rabbit
Isotype:	IgG
Clonality:	Polyclonal
Immunogen:	The immunogen for Anti-KCNMB2 antibody is: synthetic peptide directed towards the C-terminal region of Human KCNMB2. Synthetic peptide located within the following region: QKCSYIPKCGKNFEESMSLVNVMMENFRKYQHFSCYSDPEGNQKSVILTK
Formulation:	Liquid. Purified antibody supplied in 1x PBS buffer with 0.09% (w/v) sodium azide and 2% sucrose. <i>Note that this product is shipped as lyophilized powder to China customers.</i>
Concentration:	lot specific
Purification:	Protein A purified
Conjugation:	Unconjugated
Storage:	Store at -20°C as received.
Stability:	Stable for 12 months from date of receipt.
Predicted Protein Size:	27 kDa
Gene Name:	potassium calcium-activated channel subfamily M regulatory beta subunit 2
Database Link:	NP_852006 Entrez Gene 10242 Human Q9Y691



[View online »](#)

Background: MaxiK channels are large conductance, voltage and calcium-sensitive potassium channels which are fundamental to the control of smooth muscle tone and neuronal excitability. MaxiK channels can be formed by 2 subunits: the pore-forming alpha subunit and the modulatory beta subunit. The protein encoded by this gene is an auxiliary beta subunit which decreases the activation time of MaxiK alpha subunit currents. Alternative splicing results in multiple transcript variants of this gene. Additional variants are discussed in the literature, but their full length nature has not been described. [provided by RefSeq, Jul 2013]

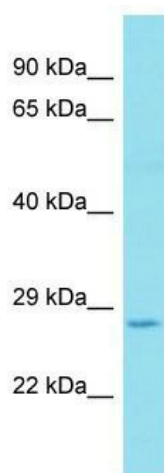
Synonyms: MGC22431

Note: Immunogen Sequence Homology: Dog: 100%; Pig: 100%; Rat: 100%; Horse: 100%; Human: 100%; Mouse: 100%; Bovine: 100%; Rabbit: 100%; Guinea pig: 100%

Protein Families: Druggable Genome, Ion Channels: Other, Transmembrane

Protein Pathways: Vascular smooth muscle contraction

Product images:



Host: Rabbit; Target Name: KCNMB2; Sample Tissue: Lung Tumor lysates; Antibody Dilution: 1.0 ug/ml