

Product datasheet for **TA338782**

LGICZ1 (ZACN) Rabbit Polyclonal Antibody

Product data:

Product Type:	Primary Antibodies
Applications:	WB
Recommended Dilution:	WB
Reactivity:	Human
Host:	Rabbit
Isotype:	IgG
Clonality:	Polyclonal
Immunogen:	The immunogen for anti-LGICZ1 antibody: synthetic peptide directed towards the N terminal of human LGICZ1. Synthetic peptide located within the following region: PSLFNVNLSKKVQESIQIPNNGSAPLLVDVRVFSNVFNVDILRYTMSSM
Formulation:	Liquid. Purified antibody supplied in 1x PBS buffer with 0.09% (w/v) sodium azide and 2% sucrose. <i>Note that this product is shipped as lyophilized powder to China customers.</i>
Concentration:	lot specific
Purification:	Protein A purified
Conjugation:	Unconjugated
Storage:	Store at -20°C as received.
Stability:	Stable for 12 months from date of receipt.
Predicted Protein Size:	46 kDa
Gene Name:	zinc activated ion channel
Database Link:	NP_851321 Entrez Gene 353174 Human Q401N2
Background:	LGICZ1 is a zinc-activated ligand-gated ion channel that defines a new subgroup of the cysteine-loop superfamily of ligand-gated ion channels (Davies et al., 2003 [PubMed 12381728]). [supplied by OMIM, Mar 2008]. ##Evidence-Data-START## Transcript exon combination :: AB223030.1, BC110597.1 [ECO:0000332] ##Evidence-Data-END## COMPLETENESS: complete on the 3' end.



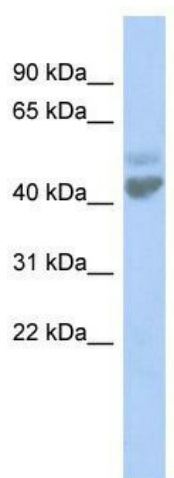
[View online »](#)

Synonyms: L2; LGICZ; LGICZ1; ZAC; ZAC1

Note: Immunogen Sequence Homology: Dog: 100%; Pig: 100%; Human: 100%; Horse: 93%; Rabbit: 86%; Bovine: 85%

Protein Families: Druggable Genome, Ion Channels: Other, Transmembrane

Product images:



WB Suggested Anti-LGICZ1 Antibody Titration:
0.2-1 ug/ml; ELISA Titer: 1:62500; Positive Control:
NCI-H226 cell lysate