

## Product datasheet for **TA338781**

### **POLDIP1 (KCTD13) Rabbit Polyclonal Antibody**

#### **Product data:**

<b>Product Type:</b>	Primary Antibodies
<b>Applications:</b>	IHC, WB
<b>Recommended Dilution:</b>	WB, IHC
<b>Reactivity:</b>	Human
<b>Host:</b>	Rabbit
<b>Isotype:</b>	IgG
<b>Clonality:</b>	Polyclonal
<b>Immunogen:</b>	The immunogen for anti-KCTD13 antibody: synthetic peptide directed towards the N terminal of human KCTD13. Synthetic peptide located within the following region: PGPAAYGLKPLTPNSKYVKLVGGSLHYTTLRRLTLTGQDTMLKAMFSGRVE
<b>Formulation:</b>	Liquid. Purified antibody supplied in 1x PBS buffer with 0.09% (w/v) sodium azide and 2% sucrose. <i>Note that this product is shipped as lyophilized powder to China customers.</i>
<b>Concentration:</b>	lot specific
<b>Purification:</b>	Protein A purified
<b>Conjugation:</b>	Unconjugated
<b>Storage:</b>	Store at -20°C as received.
<b>Stability:</b>	Stable for 12 months from date of receipt.
<b>Predicted Protein Size:</b>	36 kDa
<b>Gene Name:</b>	potassium channel tetramerization domain containing 13
<b>Database Link:</b>	<a href="#">NP_849194</a> <a href="#">Entrez Gene 253980 Human</a> <a href="#">Q8WZ19</a>
<b>Background:</b>	KCTD13 mRNA is expressed in 3T3-L1 adipocytes and THP-1 macrophages. It is suggested that this gene provides a link between cytokine activation and DNA replication in liver as well as in other tissues.
<b>Synonyms:</b>	BACURD1; FKSG86; hBACURD1; PDIP1; POLDIP1

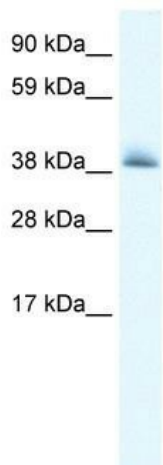


[View online »](#)

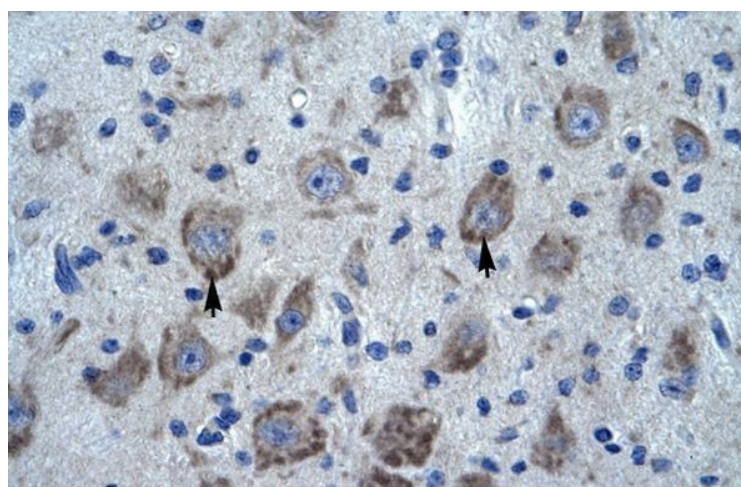
**Note:** Immunogen Sequence Homology: Dog: 100%; Human: 100%; Rabbit: 100%; Rat: 93%; Mouse: 93%; Bovine: 93%

**Protein Families:** Ion Channels: Other, Transcription Factors

**Product images:**



WB Suggested Anti-KCTD13 Antibody Titration: 0.2-1 ug/ml; ELISA Titer: 1:1562500; Positive Control: Human heart



Human Brain