

## Product datasheet for **TA338777**

### **P2X2 (P2RX2) Rabbit Polyclonal Antibody**

#### **Product data:**

Product Type:	Primary Antibodies
Applications:	WB
Recommended Dilution:	WB
Reactivity:	Human
Host:	Rabbit
Isotype:	IgG
Clonality:	Polyclonal
Immunogen:	The immunogen for anti-P2RX2 antibody: synthetic peptide directed towards the N terminal of human P2RX2. Synthetic peptide located within the following region: VVRNRRLGVLYRAVQLLILLYFVWYVFIVQKSYQESETGPESSIITKVKG
Formulation:	Liquid. Purified antibody supplied in 1x PBS buffer with 0.09% (w/v) sodium azide and 2% sucrose. <i>Note that this product is shipped as lyophilized powder to China customers.</i>
Concentration:	lot specific
Purification:	Protein A purified
Conjugation:	Unconjugated
Storage:	Store at -20°C as received.
Stability:	Stable for 12 months from date of receipt.
Predicted Protein Size:	44 kDa
Gene Name:	purinergic receptor P2X 2
Database Link:	<a href="#">NP_733783</a> <a href="#">Entrez Gene 22953 Human</a> <a href="#">Q9UBL9</a>
Background:	The product of this gene belongs to the family of purinoceptors for ATP. This receptor functions as a ligand-gated ion channel. Binding to ATP mediates synaptic transmission between neurons and from neurons to smooth muscle. Multiple transcript variants encoding distinct isoforms have been identified for this gene. [provided by RefSeq, Aug 2013]
Synonyms:	DFNA41; P2X2



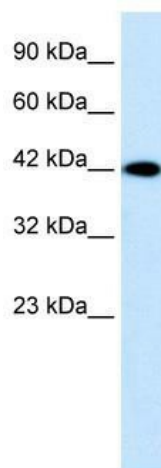
[View online »](#)

**Note:** Immunogen Sequence Homology: Human: 100%; Rabbit: 100%; Dog: 93%; Pig: 93%; Rat: 93%; Mouse: 93%; Bovine: 93%; Guinea pig: 93%; Horse: 86%; Zebrafish: 79%

**Protein Families:** Druggable Genome, Ion Channels: ATP Receptors, Transmembrane

**Protein Pathways:** Calcium signaling pathway, Neuroactive ligand-receptor interaction

**Product images:**



WB Suggested Anti-P2RX2 Antibody Titration: 0.2-1 ug/ml; ELISA Titer: 1:1562500; Positive Control: Jurkat cell lysate