

## Product datasheet for **TA338775**

### CLCN3 Rabbit Polyclonal Antibody

#### Product data:

Product Type:	Primary Antibodies
Applications:	IHC, WB
Recommended Dilution:	WB, IHC
Reactivity:	Human
Host:	Rabbit
Isotype:	IgG
Clonality:	Polyclonal
Immunogen:	The immunogen for anti-CLCN3 antibody: synthetic peptide is 86% homologous to the C terminal of human CLCN3.. Synthetic peptide located within the following region: VGDAFGREGIYEAHIRLNGYPFLDAKEEFHTTTLAADVMRPRRNDPPLAVL
Formulation:	Liquid. Purified antibody supplied in 1x PBS buffer with 0.09% (w/v) sodium azide and 2% sucrose. <i>Note that this product is shipped as lyophilized powder to China customers.</i>
Concentration:	lot specific
Purification:	Protein A purified
Conjugation:	Unconjugated
Storage:	Store at -20°C as received.
Stability:	Stable for 12 months from date of receipt.
Predicted Protein Size:	95 kDa
Gene Name:	chloride voltage-gated channel 3
Database Link:	<a href="#">NP_776297</a> <a href="#">Entrez Gene 1182 Human</a> <a href="#">P51790</a>



[View online »](#)

**Background:**

This gene encodes a member of the voltage-gated chloride channel (ClC) family. The encoded protein is present in all cell types and localized in plasma membranes and in intracellular vesicles. It is a multi-pass membrane protein which contains a ClC domain and two additional C-terminal CBS (cystathionine beta-synthase) domains. The ClC domain catalyzes the selective flow of Cl<sup>-</sup> ions across cell membranes, and the CBS domain may have a regulatory function. This protein plays a role in both acidification and transmitter loading of GABAergic synaptic vesicles, and in smooth muscle cell activation and neointima formation. This protein is required for lysophosphatidic acid (LPA)-activated Cl<sup>-</sup> current activity and fibroblast-to-myofibroblast differentiation. The protein activity is regulated by Ca<sup>2+</sup>/calmodulin-dependent protein kinase II (CaMKII) in glioma cells. Multiple alternatively spliced transcript variants encoding different isoforms have been identified. [provided by RefSeq, Aug 2011]

**Synonyms:**

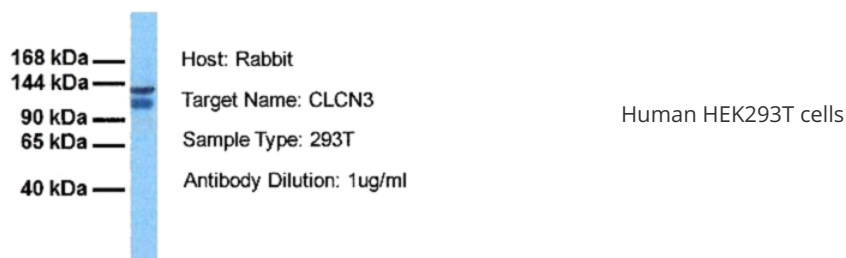
ClC-3; CLC3

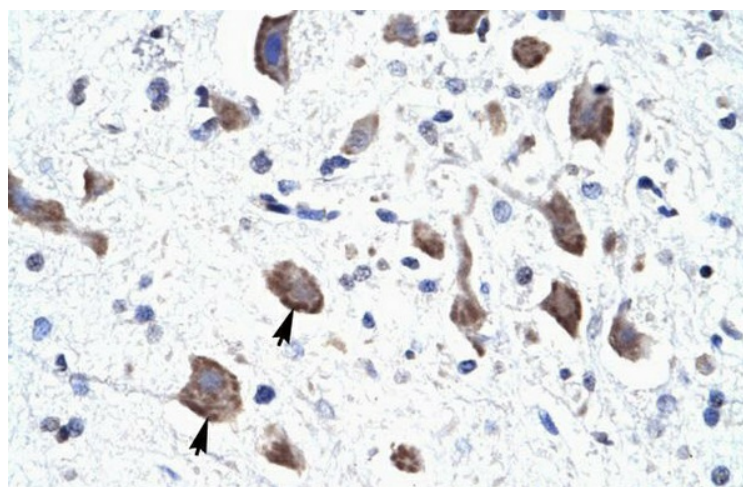
**Note:**

Immunogen Sequence Homology: Dog: 100%; Pig: 100%; Rat: 100%; Horse: 100%; Human: 100%; Mouse: 100%; Bovine: 100%; Rabbit: 100%; Zebrafish: 100%; Guinea pig: 100%; Sheep: 91%

**Protein Families:**

Druggable Genome, Ion Channels: Other, Transmembrane

**Product images:****CLCN3**



Human Brain