

Product datasheet for **TA338773**

KCNRG Rabbit Polyclonal Antibody

Product data:

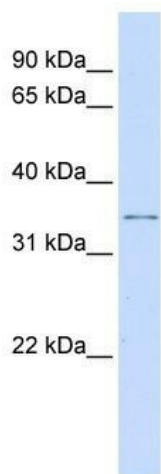
Product Type:	Primary Antibodies
Applications:	WB
Recommended Dilution:	WB
Reactivity:	Human
Host:	Rabbit
Isotype:	IgG
Clonality:	Polyclonal
Immunogen:	The immunogen for anti-KCNRG antibody: synthetic peptide directed towards the middle region of human KCNRG. Synthetic peptide located within the following region: DTLLKEGFHLVSTRTVSSEDKTECYSEFERIKSPEVLITNETPKPETIIIP
Formulation:	Liquid. Purified antibody supplied in 1x PBS buffer with 0.09% (w/v) sodium azide and 2% sucrose. <i>Note that this product is shipped as lyophilized powder to China customers.</i>
Concentration:	lot specific
Purification:	Protein A purified
Conjugation:	Unconjugated
Storage:	Store at -20°C as received.
Stability:	Stable for 12 months from date of receipt.
Predicted Protein Size:	31 kDa
Gene Name:	potassium channel regulator
Database Link:	NP_775876 Entrez Gene 283518 Human Q8N5I3
Background:	This gene encodes a protein which regulates the activity of voltage-gated potassium channels. This gene is on chromosome 13 and overlaps the gene for tripartite motif containing 13 on the same strand. Multiple transcript variants encoding different isoforms have been found for this gene. [provided by RefSeq, Feb 2012]
Synonyms:	DLTET



[View online »](#)

Note: Immunogen Sequence Homology: Human: 100%; Dog: 93%; Pig: 93%; Horse: 93%; Rabbit: 92%; Bovine: 86%

Product images:



WB Suggested Anti-KCNRG Antibody Titration:
0.2-1 ug/ml; ELISA Titer: 1:312500; Positive
Control: Human heart