

## Product datasheet for **TA338762**

### KCNH5 Rabbit Polyclonal Antibody

#### Product data:

Product Type:	Primary Antibodies
Applications:	IHC, WB
Recommended Dilution:	WB, IHC
Reactivity:	Human
Host:	Rabbit
Isotype:	IgG
Clonality:	Polyclonal
Immunogen:	The immunogen for anti-KCNH5 antibody: synthetic peptide directed towards the N terminal of human KCNH5. Synthetic peptide located within the following region: LTNSRSVLQQLTPMNKTEVVHKHSRLAEVLQLGSDILPQYKQEAPKTPPH
Formulation:	Liquid. Purified antibody supplied in 1x PBS buffer with 0.09% (w/v) sodium azide and 2% sucrose. <i>Note that this product is shipped as lyophilized powder to China customers.</i>
Concentration:	lot specific
Purification:	Protein A purified
Conjugation:	Unconjugated
Storage:	Store at -20°C as received.
Stability:	Stable for 12 months from date of receipt.
Predicted Protein Size:	67 kDa
Gene Name:	potassium voltage-gated channel subfamily H member 5
Database Link:	<a href="#">NP_758963</a> <a href="#">Entrez Gene 27133 Human</a> <a href="#">Q8NCM2</a>
Background:	This gene encodes a member of voltage-gated potassium channels. Members of this family have diverse functions, including regulating neurotransmitter and hormone release, cardiac function, and cell volume. This protein is an outward-rectifying, noninactivating channel. Alternative splicing results in multiple transcript variants. [provided by RefSeq, Jul 2013]
Synonyms:	EAG2; H-EAG2; hEAG2; Kv10.2



[View online »](#)

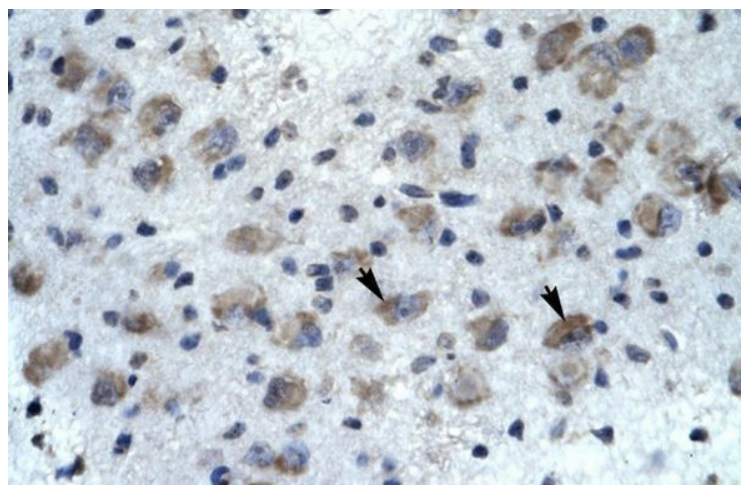
**Note:** Immunogen Sequence Homology: Dog: 100%; Pig: 100%; Rat: 100%; Horse: 100%; Human: 100%; Mouse: 100%; Bovine: 100%; Rabbit: 100%; Zebrafish: 100%; Guinea pig: 100%

**Protein Families:** Druggable Genome, Ion Channels: Potassium, Transmembrane

**Product images:**



WB Suggested Anti-KCNH5 Antibody Titration: 0.2-1 ug/ml; ELISA Titer: 1:312500; Positive Control: HepG2 cell lysate



Human Brain