

Product datasheet for **TA338761**

KCNG4 Rabbit Polyclonal Antibody

Product data:

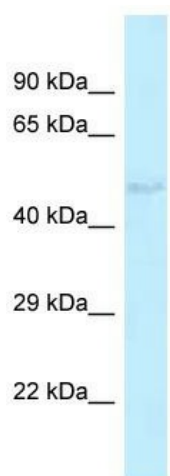
Product Type:	Primary Antibodies
Applications:	WB
Recommended Dilution:	WB
Reactivity:	Rat
Host:	Rabbit
Isotype:	IgG
Clonality:	Polyclonal
Immunogen:	The immunogen for Anti-Kcng4 antibody is: synthetic peptide directed towards the middle region of RAT Kcng4. Synthetic peptide located within the following region: SDESPEAGERPSGSSYLEKVGLVLRVLRALRILYVMRLARHSLGLQLGL
Formulation:	Liquid. Purified antibody supplied in 1x PBS buffer with 0.09% (w/v) sodium azide and 2% sucrose. <i>Note that this product is shipped as lyophilized powder to China customers.</i>
Concentration:	lot specific
Purification:	Protein A purified
Conjugation:	Unconjugated
Storage:	Store at -20°C as received.
Stability:	Stable for 12 months from date of receipt.
Predicted Protein Size:	55 kDa
Gene Name:	potassium voltage-gated channel modifier subfamily G member 4
Database Link:	NP_758857 Entrez Gene 307900 Rat Q8TDN1
Background:	The function of this protein remains unknown.
Synonyms:	KV6.3; KV6.4
Note:	Immunogen Sequence Homology: Human: 100%; Pig: 93%; Rat: 93%; Horse: 93%; Bovine: 93%; Dog: 86%; Mouse: 86%; Guinea pig: 85%



[View online »](#)

Protein Families: Druggable Genome, Ion Channels: Potassium, Transmembrane

Product images:



Host: Rabbit

Target Name: Kcng4

Sample Tissue: Rat Liver Lysate

Antibody Dilution: 1.0 μ g/ml

Host: Rabbit; Target Name: Kcng4 ; Sample Tissue: Rat Liver lysates; Antibody Dilution: 1.0 ug/ml