

Product datasheet for **TA338752**

KCNQ2 Rabbit Polyclonal Antibody

Product data:

Product Type:	Primary Antibodies
Applications:	IHC, WB
Recommended Dilution:	WB, IHC
Reactivity:	Human, Mouse
Host:	Rabbit
Isotype:	IgG
Clonality:	Polyclonal
Immunogen:	The immunogen for anti-KCNQ2 antibody: synthetic peptide directed towards the middle region of human KCNQ2. Synthetic peptide located within the following region: SIAVLAAGSQGNVFATSALRSLRFLQLRMIRMDRRGGTWKLLGSVVYAH
Formulation:	Liquid. Purified antibody supplied in 1x PBS buffer with 0.09% (w/v) sodium azide and 2% sucrose. <i>Note that this product is shipped as lyophilized powder to China customers.</i>
Concentration:	lot specific
Purification:	Protein A purified
Conjugation:	Unconjugated
Storage:	Store at -20°C as received.
Stability:	Stable for 12 months from date of receipt.
Predicted Protein Size:	44 kDa
Gene Name:	potassium voltage-gated channel subfamily Q member 2
Database Link:	NP_742107 Entrez Gene 16536 Mouse Entrez Gene 3785 Human O43526



[View online »](#)

Background:

The M channel is a slowly activating and deactivating potassium channel that plays a critical role in the regulation of neuronal excitability. The M channel is formed by the association of the protein encoded by this gene and a related protein encoded by the KCNQ3 gene, both integral membrane proteins. M channel currents are inhibited by M1 muscarinic acetylcholine receptors and activated by retigabine, a novel anti-convulsant drug. Defects in this gene are a cause of benign familial neonatal convulsions type 1 (BFNC), also known as epilepsy, benign neonatal type 1 (EBN1). At least five transcript variants encoding five different isoforms have been found for this gene. [provided by RefSeq, Jul 2008]

Synonyms:

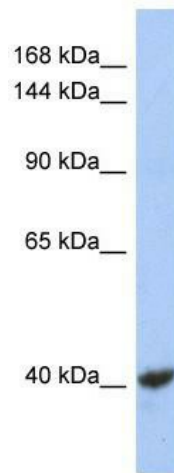
BFNC; BFNS1; EBN; EBN1; EIEE7; ENB1; HNSPC; KCNA11; KV7.2; KVEBN1

Note:

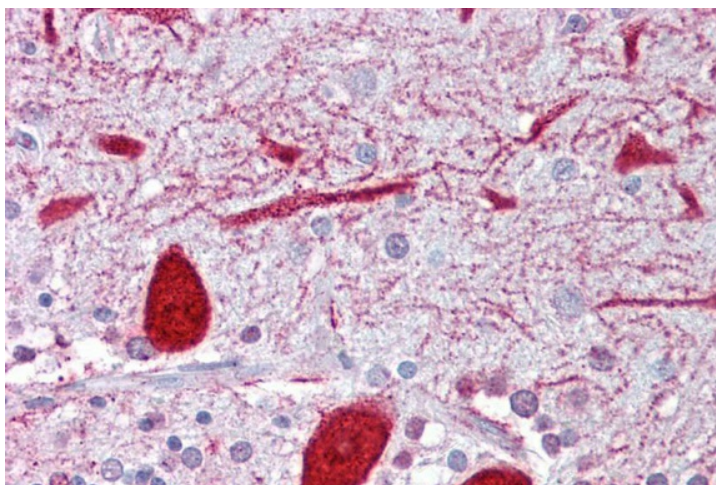
Immunogen Sequence Homology: Dog: 100%; Pig: 100%; Rat: 100%; Horse: 100%; Human: 100%; Mouse: 100%; Bovine: 100%; Guinea pig: 100%; Zebrafish: 93%; Rabbit: 92%

Protein Families:

Druggable Genome, Ion Channels: Potassium, Transmembrane

Product images:

WB Suggested Anti-KCNQ2 Antibody Titration:
0.2-1 ug/ml; ELISA Titer: 1:312500; Positive
Control: NCI-H226 cell lysate
There is BioGPS gene
expression data showing that KCNQ2 is
expressed in NCIH226



Immunohistochemistry with Brain, cerebellum tissue at an antibody concentration of 5 ug/ml using anti-KCNQ2 antibody