

Product datasheet for **TA338749**

CATSPER2 Rabbit Polyclonal Antibody

Product data:

Product Type:	Primary Antibodies
Applications:	WB
Recommended Dilution:	WB
Reactivity:	Human
Host:	Rabbit
Isotype:	IgG
Clonality:	Polyclonal
Immunogen:	The immunogen for anti-CATSPER2 antibody: synthetic peptide directed towards the N terminal of human CATSPER2. Synthetic peptide located within the following region: HLQGLSQAVPRHTIRELLDPSRQKKLVLDQHQQLVRFSIKPQRIEQISHA
Formulation:	Liquid. Purified antibody supplied in 1x PBS buffer with 0.09% (w/v) sodium azide and 2% sucrose. <i>Note that this product is shipped as lyophilized powder to China customers.</i>
Concentration:	lot specific
Purification:	Protein A purified
Conjugation:	Unconjugated
Storage:	Store at -20°C as received.
Stability:	Stable for 12 months from date of receipt.
Predicted Protein Size:	46 kDa
Database Link:	NP_742094 Entrez Gene 117155 Human
Background:	Calcium ions play a primary role in the regulation of sperm motility. This gene belongs to a family of putative cation channels that are specific to spermatozoa and localize to the flagellum. The protein family features a single repeat with six membrane-spanning segments and a predicted calcium-selective pore region. This gene is part of a tandem repeat on chromosome 15q15; the second copy of this gene is thought to be a pseudogene. Alternatively spliced transcript variants have been found for this gene. [provided by RefSeq, Jan 2014]



[View online »](#)

Synonyms: cation channel; MGC33346; OTTHUMP00000066276; OTTHUMP00000066277; OTTHUMP00000066278; sperm-associated cation channel 2; sperm associated 2; sperm ion channel

Note: Immunogen Sequence Homology: Human: 100%; Pig: 93%; Horse: 93%; Bovine: 93%; Rabbit: 93%; Dog: 92%; Rat: 83%

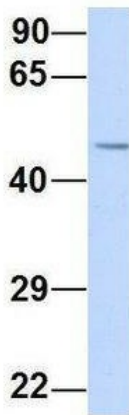
Protein Families: Druggable Genome, Ion Channels: Other, Transmembrane

Product images:



WB Suggested Anti-CATSPER2 Antibody Titration: 0.2-1 ug/ml; ELISA Titer: 1:62500; Positive Control: Human Placenta

CATSPER2



Rabbit Anti-CATSPER2
 Sample Type: Human 293T
 Antibody Concentration: 1ug/mL

Host: Rabbit; Target Name: CATSPER2; Sample Tissue: Human 293T; Antibody Dilution: 1.0 ug/ml
 CATSPER2 is supported by BioGPS gene expression data to be expressed in HEK293T