

Product datasheet for **TA338747**

KCNH2 Rabbit Polyclonal Antibody

Product data:

Product Type:	Primary Antibodies
Applications:	WB
Recommended Dilution:	WB
Reactivity:	Human
Host:	Rabbit
Isotype:	IgG
Clonality:	Polyclonal
Immunogen:	The immunogen for anti-KCNH2 antibody: synthetic peptide directed towards the middle region of human KCNH2. Synthetic peptide located within the following region: SQVSQFMACEELPPGAPQLPQEGPTRRLSLPGQLGALTSQPLHRHGSDPG
Formulation:	Liquid. Purified antibody supplied in 1x PBS buffer with 0.09% (w/v) sodium azide and 2% sucrose. <i>Note that this product is shipped as lyophilized powder to China customers.</i>
Concentration:	lot specific
Purification:	Protein A purified
Conjugation:	Unconjugated
Storage:	Store at -20°C as received.
Stability:	Stable for 12 months from date of receipt.
Predicted Protein Size:	90 kDa
Gene Name:	potassium voltage-gated channel subfamily H member 2
Database Link:	NP_742054 Entrez Gene 3757 Human Q12809
Background:	This gene encodes a voltage-activated potassium channel belonging to the eag family. It shares sequence similarity with the Drosophila ether-a-go-go (eag) gene. Mutations in this gene can cause long QT syndrome type 2 (LQT2). Transcript variants encoding distinct isoforms have been identified. [provided by RefSeq, Jul 2008]
Synonyms:	ERG-1; ERG1; H-ERG; HERG; HERG1; Kv11.1; LQT2; SQT1

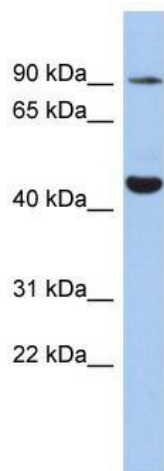


[View online »](#)

Note: Immunogen Sequence Homology: Dog: 100%; Pig: 100%; Rat: 100%; Horse: 100%; Human: 100%; Mouse: 100%; Bovine: 100%; Rabbit: 100%; Guinea pig: 100%

Protein Families: Druggable Genome, Ion Channels: Potassium, Transcription Factors, Transmembrane

Product images:



WB Suggested Anti-KCNH2 Antibody Titration:
0.2-1 ug/ml; ELISA Titer: 1:62500; Positive Control:
OVCA3 cell lysate