

## Product datasheet for **TA338746**

### KCNMB3 Rabbit Polyclonal Antibody

#### Product data:

Product Type:	Primary Antibodies
Applications:	WB
Recommended Dilution:	WB
Reactivity:	Human
Host:	Rabbit
Isotype:	IgG
Clonality:	Polyclonal
Immunogen:	The immunogen for anti-KCNMB3 antibody: synthetic peptide directed towards the middle region of human KCNMB3. Synthetic peptide located within the following region: SLTLLGGALIVGMVRLTQHLSLLCEKYSTVVRDEVGGKVPYIEQHFKLC
Formulation:	Liquid. Purified antibody supplied in 1x PBS buffer with 0.09% (w/v) sodium azide and 2% sucrose. <i>Note that this product is shipped as lyophilized powder to China customers.</i>
Concentration:	lot specific
Purification:	Protein A purified
Conjugation:	Unconjugated
Storage:	Store at -20°C as received.
Stability:	Stable for 12 months from date of receipt.
Predicted Protein Size:	31 kDa
Gene Name:	potassium calcium-activated channel subfamily M regulatory beta subunit 3
Database Link:	<a href="#">NP_741979</a> <a href="#">Entrez Gene 27094 Human</a> <a href="#">Q9NPA1</a>



[View online »](#)

**Background:** MaxiK channels are large conductance, voltage and calcium-sensitive potassium channels which are fundamental to the control of smooth muscle tone and neuronal excitability. MaxiK channels can be formed by 2 subunits: the pore-forming alpha subunit and the modulatory beta subunit. The protein encoded by this gene is an auxiliary beta subunit which may partially inactivate or slightly decrease the activation time of MaxiK alpha subunit currents. Alternative splicing results in multiple transcript variants. A related pseudogene has been identified on chromosome 22. [provided by RefSeq, Jul 2009]

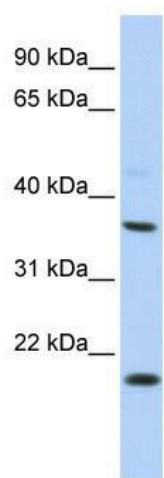
**Synonyms:** BKBETA3; HBETA3; K(VCA)BETA-3; KCNMB2; KCNMBL; SLO-BETA-3; SLOBETA3

**Note:** Immunogen Sequence Homology: Human: 100%; Rat: 92%; Dog: 91%

**Protein Families:** Druggable Genome, Ion Channels: Other, Transmembrane

**Protein Pathways:** Vascular smooth muscle contraction

### Product images:



WB Suggested Anti-KCNMB3 Antibody Titration:  
0.2-1 ug/ml; ELISA Titer: 1:62500; Positive Control:  
HepG2 cell lysate