

## Product datasheet for **TA338745**

### KCNN2 Rabbit Polyclonal Antibody

#### Product data:

Product Type:	Primary Antibodies
Applications:	WB
Recommended Dilution:	IF, WB
Reactivity:	Human, Macaque
Host:	Rabbit
Isotype:	IgG
Clonality:	Polyclonal
Immunogen:	The immunogen for anti-KCNN2 antibody: synthetic peptide directed towards the middle region of human KCNN2. Synthetic peptide located within the following region: KNAAANVLRETWLIYKNTKLVKKIDHAKVRKHQRKFLQAIHQLRSVKMEQ
Formulation:	Liquid. Purified antibody supplied in 1x PBS buffer with 0.09% (w/v) sodium azide and 2% sucrose. <i>Note that this product is shipped as lyophilized powder to China customers.</i>
Concentration:	lot specific
Purification:	Protein A purified
Conjugation:	Unconjugated
Storage:	Store at -20°C as received.
Stability:	Stable for 12 months from date of receipt.
Predicted Protein Size:	26 kDa
Gene Name:	potassium calcium-activated channel subfamily N member 2
Database Link:	<a href="#">NP_740721</a> <a href="#">Entrez Gene 3781 Human</a> <a href="#">Q9H2S1</a>



[View online »](#)

**Background:**

Action potentials in vertebrate neurons are followed by an afterhyperpolarization (AHP) that may persist for several seconds and may have profound consequences for the firing pattern of the neuron. Each component of the AHP is kinetically distinct and is mediated by different calcium-activated potassium channels. The protein encoded by this gene is activated before membrane hyperpolarization and is thought to regulate neuronal excitability by contributing to the slow component of synaptic AHP. This gene is a member of the KCNN family of potassium channel genes. The encoded protein is an integral membrane protein that forms a voltage-independent calcium-activated channel with three other calmodulin-binding subunits. Alternate splicing of this gene results in multiple transcript variants. [provided by RefSeq, May 2013]

**Synonyms:**

hSK2; KCa2.2; SK2; SKCA2; SKCa 2

**Note:**

Immunogen Sequence Homology: Dog: 100%; Pig: 100%; Rat: 100%; Horse: 100%; Human: 100%; Mouse: 100%; Bovine: 100%; Rabbit: 100%; Guinea pig: 100%; Zebrafish: 93%

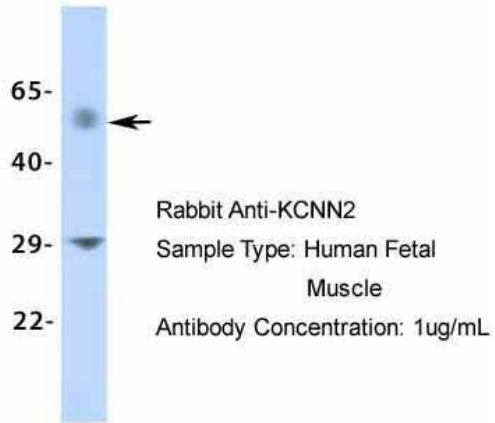
**Protein Families:**

Druggable Genome, Ion Channels: Potassium, Transmembrane

**Product images:**

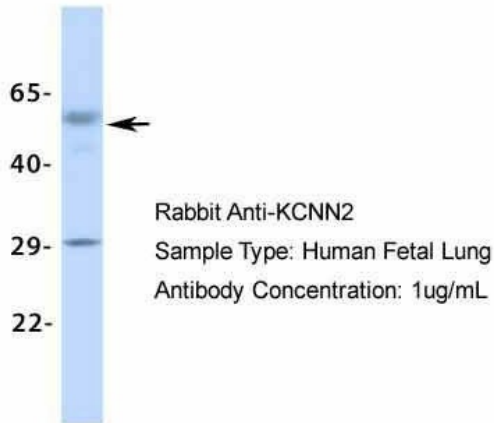
WB Suggested Anti-KCNN2 Antibody Titration:  
0.2-1 ug/ml; ELISA Titer: 1:62500; Positive Control:  
Human Muscle

## KCNN2



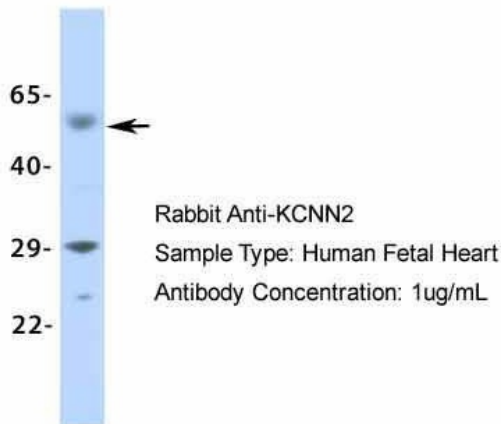
Host: Rabbit; Target Name: KCNN2; Sample Tissue: Human Fetal Muscle; Antibody Dilution: 1.0 ug/ml

## KCNN2



Host: Rabbit; Target Name: KCNN2; Sample Tissue: Human Fetal Lung; Antibody Dilution: 1.0 ug/ml

## KCNN2



Host: Rabbit; Target Name: KCNN2; Sample Tissue: Human Fetal Heart; Antibody Dilution: 1.0 ug/ml