

Product datasheet for **TA338741**

KCNJ1 Rabbit Polyclonal Antibody

Product data:

Product Type:	Primary Antibodies
Applications:	WB
Recommended Dilution:	WB
Reactivity:	Human, Mouse
Host:	Rabbit
Isotype:	IgG
Clonality:	Polyclonal
Immunogen:	The immunogen for anti-KCNJ1 antibody: synthetic peptide directed towards the middle region of human KCNJ1. Synthetic peptide located within the following region: LRKSLIGSHIYGKLLKTTVTPEGETIILDQININFVVDAGNENLFFISP
Formulation:	Liquid. Purified antibody supplied in 1x PBS buffer with 0.09% (w/v) sodium azide and 2% sucrose. <i>Note that this product is shipped as lyophilized powder to China customers.</i>
Concentration:	lot specific
Purification:	Protein A purified
Conjugation:	Unconjugated
Storage:	Store at -20°C as received.
Stability:	Stable for 12 months from date of receipt.
Predicted Protein Size:	45 kDa
Gene Name:	potassium voltage-gated channel subfamily J member 1
Database Link:	NP_000211 Entrez Gene 56379 Mouse Entrez Gene 3758 Human P48048



[View online »](#)

Background:

Potassium channels are present in most mammalian cells, where they participate in a wide range of physiologic responses. The protein encoded by this gene is an integral membrane protein and inward-rectifier type potassium channel. It is activated by internal ATP and probably plays an important role in potassium homeostasis. The encoded protein has a greater tendency to allow potassium to flow into a cell rather than out of a cell. Mutations in this gene have been associated with antenatal Bartter syndrome, which is characterized by salt wasting, hypokalemic alkalosis, hypercalciuria, and low blood pressure. Multiple transcript variants encoding different isoforms have been found for this gene. [provided by RefSeq, Jul 2008]

Synonyms:

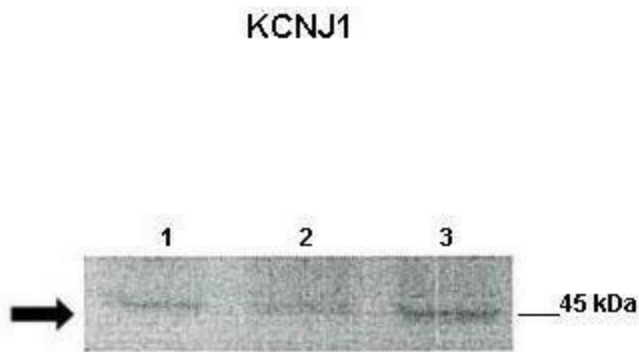
KIR1.1; ROMK; ROMK1

Note:

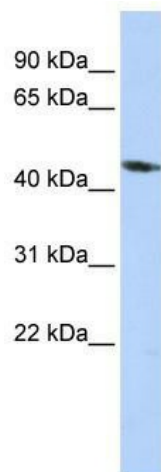
Immunogen Sequence Homology: Dog: 100%; Pig: 100%; Rat: 100%; Horse: 100%; Human: 100%; Rabbit: 100%; Guinea pig: 100%; Mouse: 93%; Bovine: 86%; Zebrafish: 86%

Protein Families:

Druggable Genome, Ion Channels: Potassium, Transmembrane

Product images:


Lanes: ; Lane 1: 30ug mouse renal epithelial lysate; Lane 2: 30ug mouse renal epithelial lysate; Lane 3: 30ug mouse renal epithelial lysate; Primary Antibody Dilution: ; 1:500; Secondary Antibody: ; Anti-rabbit-HRP; Secondary Antibody Dilution: ; 1:2500;



WB Suggested Anti-KCNJ1 Antibody Titration: 0.2-1 ug/ml; ELISA Titer: 1:312500; Positive Control: HepG2 cell lysate