

Product datasheet for **TA338740**

KCTD6 Rabbit Polyclonal Antibody

Product data:

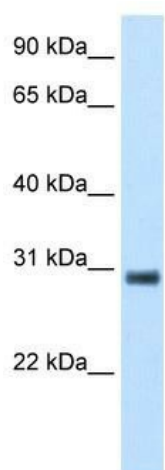
Product Type:	Primary Antibodies
Applications:	IHC, WB
Recommended Dilution:	WB, IHC
Reactivity:	Human
Host:	Rabbit
Isotype:	IgG
Clonality:	Polyclonal
Immunogen:	The immunogen for anti-KCTD6 antibody: synthetic peptide directed towards the N terminal of human KCTD6. Synthetic peptide located within the following region: HLYTTSLTTLTRYDPSMLGAMFGGDFPTTRDPQGNFYFINRDGPLFRYVLN
Formulation:	Liquid. Purified antibody supplied in 1x PBS buffer with 0.09% (w/v) sodium azide and 2% sucrose. <i>Note that this product is shipped as lyophilized powder to China customers.</i>
Concentration:	lot specific
Purification:	Protein A purified
Conjugation:	Unconjugated
Storage:	Store at -20°C as received.
Stability:	Stable for 12 months from date of receipt.
Predicted Protein Size:	28 kDa
Gene Name:	potassium channel tetramerization domain containing 6
Database Link:	NP_699162 Entrez Gene 200845 Human Q8NC69
Background:	KCTD6 is a domain of potassium channel.
Synonyms:	KCASH3
Note:	Immunogen Sequence Homology: Dog: 93%; Pig: 93%; Rat: 93%; Horse: 93%; Human: 93%; Mouse: 93%; Bovine: 93%; Rabbit: 93%; Zebrafish: 93%; Guinea pig: 93%



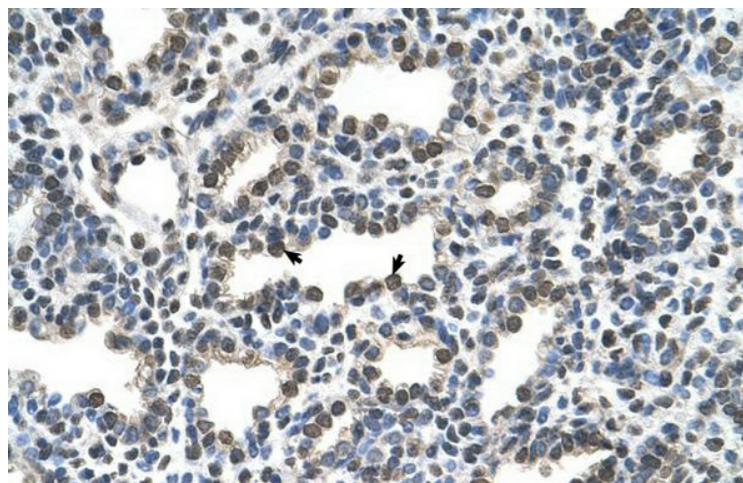
[View online »](#)

Protein Families: Ion Channels: Other

Product images:



WB Suggested Anti-KCTD6 Antibody Titration: 5.0 ug/ml; ELISA Titer: 1:312500; Positive Control: Transfected 293T



Human Lung