

Product datasheet for **TA338738**

KCTD7 Rabbit Polyclonal Antibody

Product data:

Product Type:	Primary Antibodies
Applications:	WB
Recommended Dilution:	WB
Reactivity:	Human
Host:	Rabbit
Isotype:	IgG
Clonality:	Polyclonal
Immunogen:	The immunogen for anti-KCTD7 antibody: synthetic peptide directed towards the N terminal of human KCTD7. Synthetic peptide located within the following region: VVVTGREPDSRRQDGAMSSSDAEDDFLEPATPTATQAGHALPLLPQEFPE
Formulation:	Liquid. Purified antibody supplied in 1x PBS buffer with 0.09% (w/v) sodium azide and 2% sucrose. <i>Note that this product is shipped as lyophilized powder to China customers.</i>
Concentration:	lot specific
Purification:	Protein A purified
Conjugation:	Unconjugated
Storage:	Store at -20°C as received.
Stability:	Stable for 12 months from date of receipt.
Predicted Protein Size:	33 kDa
Gene Name:	potassium channel tetramerization domain containing 7
Database Link:	NP_694578 Entrez Gene 154881 Human Q96MP8
Background:	This gene encodes a member of the potassium channel tetramerization domain-containing protein family. Family members are identified on a structural basis and contain an amino-terminal domain similar to the T1 domain present in the voltage-gated potassium channel. Mutations in this gene have been associated with progressive myoclonic epilepsy-3. Alternative splicing results in multiple transcript variants. [provided by RefSeq, Jan 2011]



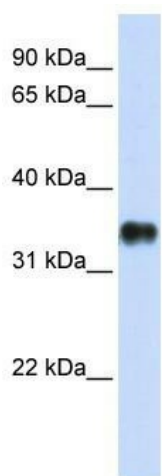
[View online »](#)

Synonyms: CLN14; EPM3

Note: Immunogen Sequence Homology: Dog: 100%; Pig: 100%; Rat: 100%; Horse: 100%; Human: 100%; Mouse: 100%; Bovine: 100%; Rabbit: 100%

Protein Families: Ion Channels: Other

Product images:



WB Suggested Anti-KCTD7 Antibody Titration: 0.2-1 ug/ml; ELISA Titer: 1:62500; Positive Control: Transfected 293T

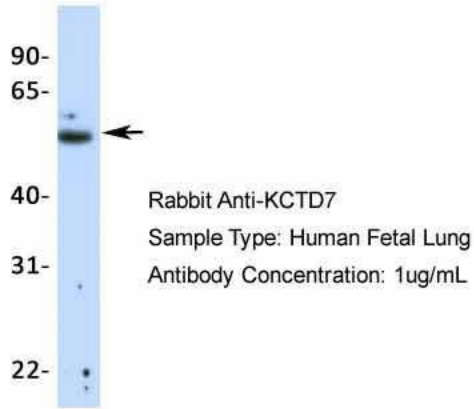
KCTD7



Rabbit Anti-KCTD7
 Sample Type: Human Adult Placenta
 Antibody Concentration: 1ug/mL

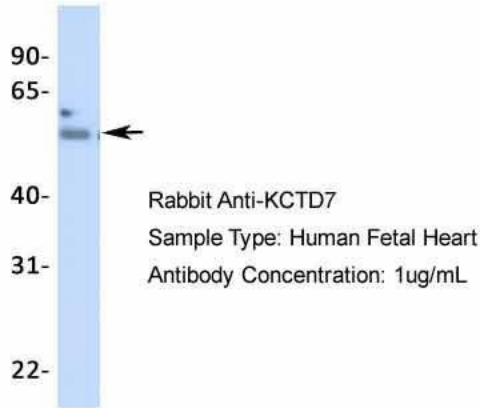
Host: Rabbit; Target Name: KCTD7; Sample Tissue: Human Adult Placenta; Antibody Dilution: 1.0 ug/ml

KCTD7



Host: Rabbit; Target Name: KCTD7; Sample Tissue: Human Fetal Lung; Antibody Dilution: 1.0 ug/ml

KCTD7



Host: Rabbit; Target Name: KCTD7; Sample Tissue: Human Fetal Heart; Antibody Dilution: 1.0 ug/ml