

Product datasheet for **TA338737**

KCTD18 Rabbit Polyclonal Antibody

Product data:

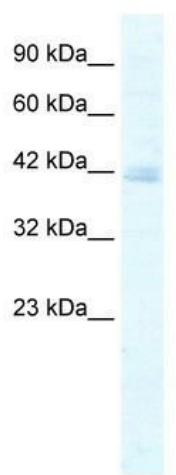
| | |
|-------------------------|---|
| Product Type: | Primary Antibodies |
| Applications: | WB |
| Recommended Dilution: | WB |
| Reactivity: | Human |
| Host: | Rabbit |
| Isotype: | IgG |
| Clonality: | Polyclonal |
| Immunogen: | The immunogen for anti-KCTD18 antibody: synthetic peptide directed towards the N terminal of human KCTD18. Synthetic peptide located within the following region: LHYLNTSGASCESRIIGVYATKTDGTD AIEKQLGGRIHSGIFKREAGNN |
| Formulation: | Liquid. Purified antibody supplied in 1x PBS buffer with 0.09% (w/v) sodium azide and 2% sucrose. <i>Note that this product is shipped as lyophilized powder to China customers.</i> |
| Concentration: | lot specific |
| Purification: | Protein A purified |
| Conjugation: | Unconjugated |
| Storage: | Store at -20°C as received. |
| Stability: | Stable for 12 months from date of receipt. |
| Predicted Protein Size: | 47 kDa |
| Gene Name: | potassium channel tetramerization domain containing 18 |
| Database Link: | NP_689600 Entrez Gene 130535 Human Q6PI47 |
| Background: | The function of Anti-KCTD18 has not yet been determined. |
| Synonyms: | 6530404F10Rik |
| Note: | Immunogen Sequence Homology: Human: 100%; Dog: 93%; Pig: 93%; Rat: 93%; Horse: 93%; Mouse: 93%; Bovine: 93%; Rabbit: 86% |



[View online »](#)

Protein Families: Ion Channels: Other

Product images:



WB Suggested Anti-KCTD18 Antibody Titration:
5.0 ug/ml; ELISA Titer: 1:312500; Positive Control:
Jurkat cell lysate