

## Product datasheet for **TA338733**

### KCNH8 Rabbit Polyclonal Antibody

#### Product data:

Product Type:	Primary Antibodies
Applications:	WB
Recommended Dilution:	WB
Reactivity:	Mouse
Host:	Rabbit
Isotype:	IgG
Clonality:	Polyclonal
Immunogen:	The immunogen for anti-Kcnh8 antibody: synthetic peptide corresponding to a region of Mouse. Synthetic peptide located within the following region: LVGSSPQRTEAHEQNPADSELHHSPNLDYSPSHCQVIQEGHLQFLRCISP
Formulation:	Liquid. Purified antibody supplied in 1x PBS buffer with 0.09% (w/v) sodium azide and 2% sucrose. <i>Note that this product is shipped as lyophilized powder to China customers.</i>
Concentration:	lot specific
Purification:	Protein A purified
Conjugation:	Unconjugated
Storage:	Store at -20°C as received.
Stability:	Stable for 12 months from date of receipt.
Predicted Protein Size:	123 kDa
Gene Name:	potassium voltage-gated channel subfamily H member 8
Database Link:	<a href="#">NP_653234</a> <a href="#">Entrez Gene 211468 Mouse</a> <a href="#">Q96L42</a>
Background:	Pore-forming (alpha) subunit of voltage-gated potassium channel. Elicits a slowly activating, outward rectifying current (By similarity). Channel properties may be modulated by cAMP and subunit assembly.
Synonyms:	ELK; ELK1; elk3; Kv12.1

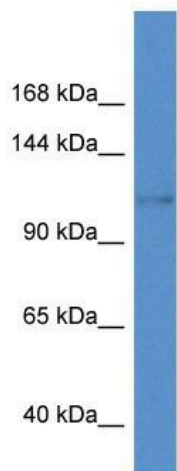


[View online »](#)

**Note:** Immunogen Sequence Homology: Dog: 100%; Pig: 100%; Horse: 100%; Human: 100%; Mouse: 93%; Rabbit: 92%; Guinea pig: 86%; Rat: 85%

**Protein Families:** Druggable Genome, Ion Channels: Potassium, Transmembrane

**Product images:**



WB Suggested Anti-Kcnh8 Antibody; Titration: 1.0 ug/ml; Positive Control: Mouse Heart