

Product datasheet for **TA338732**

CHRFAM7A Rabbit Polyclonal Antibody

Product data:

Product Type:	Primary Antibodies
Applications:	WB
Recommended Dilution:	WB
Reactivity:	Human
Host:	Rabbit
Isotype:	IgG
Clonality:	Polyclonal
Immunogen:	The immunogen for anti-CHRFAM7A antibody: synthetic peptide directed towards the N terminal of human CHRFAM7A. Synthetic peptide located within the following region: QFQLLIQHLLWIAANCDIADERFDATFHTNVLNSSGHCQYLPPGIFKSSC
Formulation:	Liquid. Purified antibody supplied in 1x PBS buffer with 0.09% (w/v) sodium azide and 2% sucrose. <i>Note that this product is shipped as lyophilized powder to China customers.</i>
Concentration:	lot specific
Purification:	Protein A purified
Conjugation:	Unconjugated
Storage:	Store at -20°C as received.
Stability:	Stable for 12 months from date of receipt.
Predicted Protein Size:	45 kDa
Gene Name:	CHRNA7 (exons 5-10) and FAM7A (exons A-E) fusion
Database Link:	NP_647536 Entrez Gene 89832 Human Q494W8



[View online »](#)

Background:

The nicotinic acetylcholine receptors (nAChRs) are members of a superfamily of ligand-gated ion channels that mediate fast signal transmission at synapses. The family member CHRNA7, which is located on chromosome 15 in a region associated with several neuropsychiatric disorders, is partially duplicated and forms a hybrid with a novel gene from the family with sequence similarity 7 (FAM7A). Alternative splicing has been observed, and two variants exist, for this hybrid gene. The N-terminally truncated products predicted by the largest open reading frames for each variant would lack the majority of the neurotransmitter-gated ion-channel ligand binding domain but retain the transmembrane region that forms the ion channel. Although current evidence supports transcription of this hybrid gene, translation of the nicotinic acetylcholine receptor-like protein-encoding open reading frames has not been confirmed. [provided by RefSeq, Jul 2008]

Synonyms:

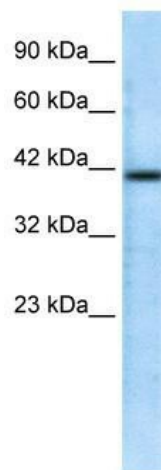
CHRNA7; CHRNA7-DR1; D-10

Note:

Immunogen Sequence Homology: Dog: 100%; Pig: 100%; Rat: 100%; Horse: 100%; Human: 100%; Mouse: 100%; Bovine: 100%; Rabbit: 100%; Zebrafish: 100%; Guinea pig: 100%

Protein Families:

Druggable Genome, Ion Channels: Other, Transmembrane

Product images:

WB Suggested Anti-CHRFAM7A Antibody
Titration: 0.2-1 ug/ml; ELISA Titer: 1:62500;
Positive Control: Jurkat cell lysate CHRFAM7A is supported by BioGPS gene expression data to be expressed in Jurkat