

## Product datasheet for **TA338731**

### CHRFAM7A Rabbit Polyclonal Antibody

#### Product data:

Product Type:	Primary Antibodies
Applications:	WB
Recommended Dilution:	WB
Reactivity:	Human
Host:	Rabbit
Isotype:	IgG
Clonality:	Polyclonal
Immunogen:	The immunogen for anti-CHRFAM7A antibody: synthetic peptide directed towards the middle region of human CHRFAM7A. Synthetic peptide located within the following region: QRRCSLASVEMSAVAPPPASNGNLLYIGFRGLDGVHCVPTPDSGVVCGRM
Formulation:	Liquid. Purified antibody supplied in 1x PBS buffer with 0.09% (w/v) sodium azide and 2% sucrose. <i>Note that this product is shipped as lyophilized powder to China customers.</i>
Concentration:	lot specific
Purification:	Protein A purified
Conjugation:	Unconjugated
Storage:	Store at -20°C as received.
Stability:	Stable for 12 months from date of receipt.
Predicted Protein Size:	35 kDa
Gene Name:	CHRNA7 (exons 5-10) and FAM7A (exons A-E) fusion
Database Link:	<a href="#">NP_683709</a> <a href="#">Entrez Gene 89832 Human</a> <a href="#">Q494W8</a>



[View online »](#)

**Background:**

The nicotinic acetylcholine receptors (nAChRs) are members of a superfamily of ligand-gated ion channels that mediate fast signal transmission at synapses. The family member CHRNA7, which is located on chromosome 15 in a region associated with several neuropsychiatric disorders, is partially duplicated and forms a hybrid with a novel gene from the family with sequence similarity 7 (FAM7A). Alternative splicing has been observed, and two variants exist, for this hybrid gene. The N-terminally truncated products predicted by the largest open reading frames for each variant would lack the majority of the neurotransmitter-gated ion-channel ligand binding domain but retain the transmembrane region that forms the ion channel. Although current evidence supports transcription of this hybrid gene, translation of the nicotinic acetylcholine receptor-like protein-encoding open reading frames has not been confirmed. [provided by RefSeq, Jul 2008]

**Synonyms:**

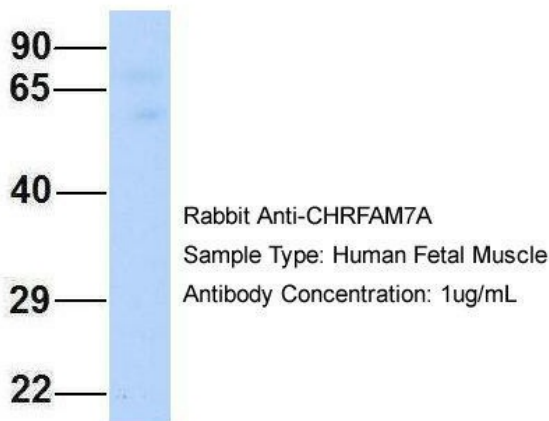
CHRNA7; CHRNA7-DR1; D-10

**Note:**

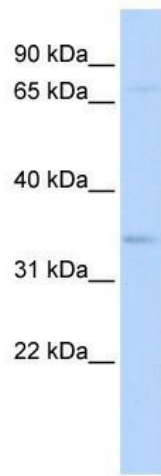
Immunogen Sequence Homology: Dog: 100%; Pig: 100%; Rat: 100%; Human: 100%; Mouse: 100%; Guinea pig: 100%; Horse: 93%; Bovine: 93%; Rabbit: 93%; Zebrafish: 92%

**Protein Families:**

Druggable Genome, Ion Channels: Other, Transmembrane

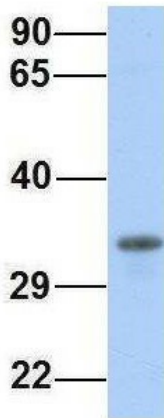
**Product images:****CHRFAM7A**

Host: Rabbit; Target Name: CHRFAM7A; Sample Tissue: Human Fetal Muscle; Antibody Dilution: 1.0 ug/ml



WB Suggested Anti-CHRFAM7A Antibody  
Titration: 0.2-1 ug/ml; ELISA Titer: 1:62500;  
Positive Control: 293T cell lysate CHRFAM7A is  
supported by BioGPS gene expression data to be  
expressed in HEK293T

## CHRFAM7A



Rabbit Anti-CHRFAM7A  
Sample Type: Human 721\_B  
Antibody Concentration: 1ug/mL

Host: Rabbit; Target Name: CHRFAM7A; Sample  
Tissue: 721\_B; Antibody Dilution: 1.0 ug/ml;  
CHRFAM7A is supported by BioGPS gene  
expression data to be expressed in 721\_B