

## Product datasheet for **TA338729**

### SHKBP1 Rabbit Polyclonal Antibody

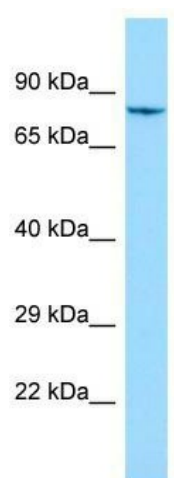
#### Product data:

Product Type:	Primary Antibodies
Applications:	WB
Recommended Dilution:	WB
Reactivity:	Human
Host:	Rabbit
Isotype:	IgG
Clonality:	Polyclonal
Immunogen:	The immunogen for Anti-SHKBP1 antibody is: synthetic peptide directed towards the N-terminal region of Human SHKBP1. Synthetic peptide located within the following region: TVFAPILNFLRTKELDPRGVHGSLLHEAQFYGLTPLVRRLLQLREELDRS
Formulation:	Liquid. Purified antibody supplied in 1x PBS buffer with 0.09% (w/v) sodium azide and 2% sucrose.
Concentration:	lot specific
Purification:	Protein A purified
Conjugation:	Unconjugated
Storage:	Store at -20°C as received.
Stability:	Stable for 12 months from date of receipt.
Predicted Protein Size:	76 kDa
Gene Name:	SH3KBP1 binding protein 1
Database Link:	<a href="#">NP_612401</a> <a href="#">Entrez Gene 92799 Human</a> <a href="#">Q8TBC3</a>
Background:	The function of this protein remains unknown.
Synonyms:	PP203; Sb1
Note:	Immunogen Sequence Homology: Dog: 100%; Rat: 100%; Horse: 100%; Human: 100%; Mouse: 100%; Bovine: 100%; Pig: 93%; Guinea pig: 93%
Protein Families:	Ion Channels: Other



[View online »](#)

## Product images:



WB Suggested Anti-SHKBP1 Antibody; Titration:  
1.0 ug/ml; Positive Control: HepG2 Whole Cell