

Product datasheet for TA338724

CLIC6 Rabbit Polyclonal Antibody

Product data:

Product Type:	Primary Antibodies
Applications:	WB
Recommended Dilution:	WB
Reactivity:	Human
Host:	Rabbit
Isotype:	IgG
Clonality:	Polyclonal
Immunogen:	The immunogen for anti-CLIC6 antibody: synthetic peptide directed towards the middle region of human CLIC6. Synthetic peptide located within the following region: RREDGEASEPRALGQEHDITLFVKAGYDGSIGNCPFSQRLFMILWLKGV
Formulation:	Liquid. Purified antibody supplied in 1x PBS buffer with 0.09% (w/v) sodium azide and 2% sucrose.
Concentration:	lot specific
Purification:	Protein A purified
Conjugation:	Unconjugated
Storage:	Store at -20°C as received.
Stability:	Stable for 12 months from date of receipt.
Predicted Protein Size:	75 kDa
Gene Name:	chloride intracellular channel 6
Database Link:	NP_444507 Entrez Gene 54102 Human Q96NY7
Background:	This gene encodes a member of the chloride intracellular channel family of proteins. The gene is part of a large triplicated region found on chromosomes 1, 6, and 21. An alternatively spliced transcript variant has been described, but its biological validity has not been determined. [provided by RefSeq, Jul 2008]
Synonyms:	CLIC1L

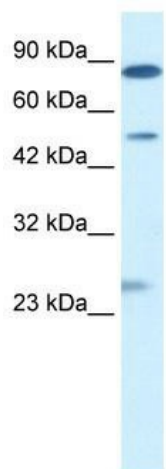


[View online »](#)

Note: Immunogen Sequence Homology: Pig: 100%; Rat: 100%; Human: 100%; Mouse: 100%; Rabbit: 100%

Protein Families: Druggable Genome

Product images:



WB Suggested Anti-CLIC6 Antibody Titration: 0.2-1 ug/ml; ELISA Titer: 1:2500; Positive Control: Jurkat cell lysate