

Product datasheet for **TA338719**

TOMM40L Rabbit Polyclonal Antibody

Product data:

Product Type:	Primary Antibodies
Applications:	WB
Recommended Dilution:	WB
Reactivity:	Human
Host:	Rabbit
Isotype:	IgG
Clonality:	Polyclonal
Immunogen:	The immunogen for anti-TOMM40L antibody: synthetic peptide directed towards the middle region of human TOMM40L. Synthetic peptide located within the following region: LNAQVLLLLAERLRAKAVFQTQQAKFLTWQFDGEYRGDDYTATLTLGNPD
Formulation:	Liquid. Purified antibody supplied in 1x PBS buffer with 0.09% (w/v) sodium azide and 2% sucrose. <i>Note that this product is shipped as lyophilized powder to China customers.</i>
Concentration:	lot specific
Purification:	Protein A purified
Conjugation:	Unconjugated
Storage:	Store at -20°C as received.
Stability:	Stable for 12 months from date of receipt.
Predicted Protein Size:	34 kDa
Gene Name:	translocase of outer mitochondrial membrane 40 like
Database Link:	NP_115550 Entrez Gene 84134 Human Q969M1
Background:	Potential channel-forming protein implicated in import of protein precursors into mitochondria.
Synonyms:	TOMM40B



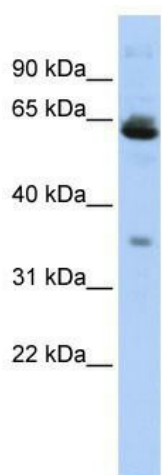
[View online »](#)

Note: Immunogen Sequence Homology: Dog: 100%; Pig: 100%; Rat: 100%; Horse: 100%; Human: 100%; Mouse: 100%; Bovine: 100%; Rabbit: 100%; Guinea pig: 100%; Zebrafish: 79%

Protein Families: Druggable Genome, Ion Channels: Other

Protein Pathways: Amyotrophic lateral sclerosis (ALS)

Product images:



WB Suggested Anti-TOMM40L Antibody Titration:
0.2-1 ug/ml; ELISA Titer: 1:312500; Positive
Control: HepG2 cell lysate