

## Product datasheet for **TA338718**

### KCTD10 Rabbit Polyclonal Antibody

#### Product data:

Product Type:	Primary Antibodies
Applications:	WB
Recommended Dilution:	WB
Reactivity:	Human
Host:	Rabbit
Isotype:	IgG
Clonality:	Polyclonal
Immunogen:	The immunogen for anti-KCTD10 antibody: synthetic peptide directed towards the middle region of human KCTD10. Synthetic peptide located within the following region: EETLNILLYEAQDGRGPDNALLEATGGAAGRSHHLDEDEERERIERVRR
Formulation:	Liquid. Purified antibody supplied in 1x PBS buffer with 0.09% (w/v) sodium azide and 2% sucrose. <i>Note that this product is shipped as lyophilized powder to China customers.</i>
Concentration:	lot specific
Purification:	Protein A purified
Conjugation:	Unconjugated
Storage:	Store at -20°C as received.
Stability:	Stable for 12 months from date of receipt.
Predicted Protein Size:	35 kDa
Gene Name:	potassium channel tetramerization domain containing 10
Database Link:	<a href="#">NP_114160</a> <a href="#">Entrez Gene 83892 Human</a> <a href="#">Q9H3F6</a>
Background:	Substrate-specific adapter of a BCR (BTB-CUL3-RBX1) E3 ubiquitin-protein ligase complex. The BCR(BACURD3) E3 ubiquitin ligase complex mediates the ubiquitination of target proteins, leading to their degradation by the proteasome.
Synonyms:	BTBD28; hBACURD3; MSTP028; ULRO61

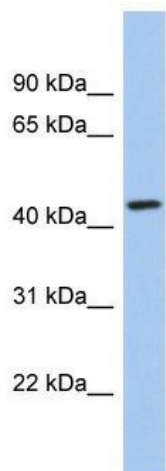


[View online »](#)

**Note:** Immunogen Sequence Homology: Dog: 100%; Pig: 100%; Rat: 100%; Horse: 100%; Human: 100%; Mouse: 100%; Bovine: 100%; Rabbit: 100%; Guinea pig: 100%; Zebrafish: 93%

**Protein Families:** Ion Channels: Other

**Product images:**



WB Suggested Anti-KCTD10 Antibody Titration:  
0.2-1 ug/ml; ELISA Titer: 1:312500; Positive  
Control: Human Spleen