

Product datasheet for **TA338716**

CACNG6 Rabbit Polyclonal Antibody

Product data:

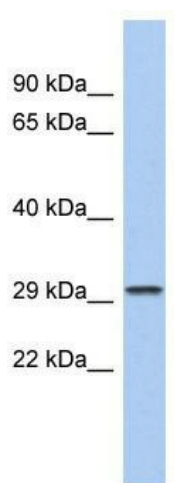
Product Type:	Primary Antibodies
Applications:	WB
Recommended Dilution:	WB
Reactivity:	Human
Host:	Rabbit
Isotype:	IgG
Clonality:	Polyclonal
Immunogen:	The immunogen for anti-CACNG6 antibody: synthetic peptide directed towards the N terminal of human CACNG6. Synthetic peptide located within the following region: MMWSNFFLQEENRRRGGAAGRRRAHGQGRSGLTPEREGKVKLALLLAAVGA
Formulation:	Liquid. Purified antibody supplied in 1x PBS buffer with 0.09% (w/v) sodium azide and 2% sucrose. <i>Note that this product is shipped as lyophilized powder to China customers.</i>
Concentration:	lot specific
Purification:	Protein A purified
Conjugation:	Unconjugated
Storage:	Store at -20°C as received.
Stability:	Stable for 12 months from date of receipt.
Predicted Protein Size:	28 kDa
Gene Name:	calcium voltage-gated channel auxiliary subunit gamma 6
Database Link:	NP_665813 Entrez Gene 59285 Human Q9BXT2



[View online »](#)

Background:	Voltage-dependent calcium channels are composed of five subunits. The protein encoded by this gene represents one of these subunits, gamma, and is one of two known gamma subunit proteins. This particular gamma subunit is an integral membrane protein that is thought to stabilize the calcium channel in an inactive (closed) state. This gene is part of a functionally diverse eight-member protein subfamily of the PMP-22/EMP/MP20 family and is located in a cluster with two family members that function as transmembrane AMPA receptor regulatory proteins (TARPs). Alternative splicing results in multiple transcript variants. Variants in this gene have been associated with aspirin-intolerant asthma. [provided by RefSeq, Dec 2010]
Synonyms:	2310033H20Rik; AW050150; calcium channel; gamma subunit 6; MGC144251; MGC144252; voltage-dependent; voltage-dependent calcium channel gamma-6 subunit
Note:	Immunogen Sequence Homology: Human: 100%; Rabbit: 92%; Rat: 91%; Mouse: 91%; Dog: 90%
Protein Families:	Druggable Genome, Ion Channels: Other, Transmembrane
Protein Pathways:	Arrhythmogenic right ventricular cardiomyopathy (ARVC), Cardiac muscle contraction, Dilated cardiomyopathy, Hypertrophic cardiomyopathy (HCM), MAPK signaling pathway

Product images:



WB Suggested Anti-CACNG6 Antibody Titration:
0.2-1 ug/ml; ELISA Titer: 1:62500; Positive Control:
Human Spleen