

Product datasheet for **TA338714**

KCNH6 Rabbit Polyclonal Antibody

Product data:

Product Type:	Primary Antibodies
Applications:	IHC, WB
Recommended Dilution:	WB, IHC
Reactivity:	Human
Host:	Rabbit
Isotype:	IgG
Clonality:	Polyclonal
Immunogen:	The immunogen for anti-KCNH6 antibody: synthetic peptide directed towards the N terminal of human KCNH6. Synthetic peptide located within the following region: GKYRTISQIPQFTLNFEVFNLEKHRSSSTTEIEIIAPHKVERTQNVTEK
Formulation:	Liquid. Purified antibody supplied in 1x PBS buffer with 0.09% (w/v) sodium azide and 2% sucrose. <i>Note that this product is shipped as lyophilized powder to China customers.</i>
Concentration:	lot specific
Purification:	Protein A purified
Conjugation:	Unconjugated
Storage:	Store at -20°C as received.
Stability:	Stable for 12 months from date of receipt.
Predicted Protein Size:	109 kDa
Gene Name:	potassium voltage-gated channel subfamily H member 6
Database Link:	NP_775115 Entrez Gene 81033 Human Q9H252



[View online »](#)

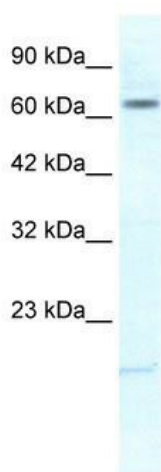
Background: Voltage-gated potassium (Kv) channels represent the most complex class of voltage-gated ion channels from both functional and structural standpoints. Their diverse functions include regulating neurotransmitter release, heart rate, insulin secretion, neuronal excitability, epithelial electrolyte transport, smooth muscle contraction, and cell volume. This gene encodes a member of the potassium channel, voltage-gated, subfamily H. This member is a pore-forming (alpha) subunit. Alternative splicing results in multiple transcript variants that encode different isoforms. [provided by RefSeq, Jul 2013]

Synonyms: ERG-2; ERG2; hERG-2; HERG2; Kv11.2

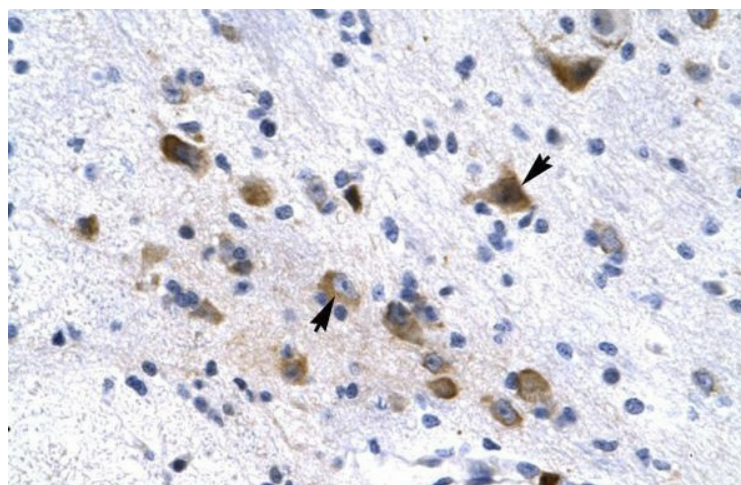
Note: Immunogen Sequence Homology: Dog: 100%; Pig: 100%; Rat: 100%; Horse: 100%; Human: 100%; Mouse: 100%; Bovine: 100%; Rabbit: 100%; Guinea pig: 100%

Protein Families: Druggable Genome, Ion Channels: Other, Transmembrane

Product images:



WB Suggested Anti-KCNH6 Antibody Titration:
1.25 ug/ml; ELISA Titer: 1:312500; Positive
Control: Jurkat cell lysate



Human Brain