

Product datasheet for TA338712

KCTD17 Rabbit Polyclonal Antibody

Product data:

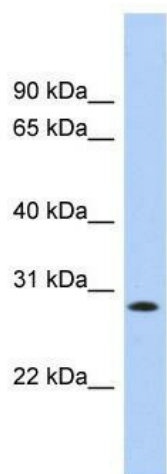
Product Type:	Primary Antibodies
Applications:	WB
Recommended Dilution:	WB
Reactivity:	Human
Host:	Rabbit
Isotype:	IgG
Clonality:	Polyclonal
Immunogen:	The immunogen for anti-KCTD17 antibody: synthetic peptide directed towards the middle region of human KCTD17. Synthetic peptide located within the following region: YGSEDQAEFLCVSKELHSTPNGLSSESSRKTSTEEQLLEEQQQEEVE
Formulation:	Liquid. Purified antibody supplied in 1x PBS buffer with 0.09% (w/v) sodium azide and 2% sucrose. <i>Note that this product is shipped as lyophilized powder to China customers.</i>
Concentration:	lot specific
Purification:	Protein A purified
Conjugation:	Unconjugated
Storage:	Store at -20°C as received.
Stability:	Stable for 12 months from date of receipt.
Predicted Protein Size:	32 kDa
Gene Name:	potassium channel tetramerization domain containing 17
Database Link:	NP_078957 Entrez Gene 79734 Human Q8N5Z5
Background:	The function of this protein remains unknown.
Synonyms:	FLJ12242; FLJ98761
Note:	Immunogen Sequence Homology: Human: 100%; Pig: 92%; Guinea pig: 92%; Rat: 86%; Mouse: 86%; Dog: 79%; Bovine: 79%



[View online »](#)

Protein Families: Ion Channels: Other

Product images:



WB Suggested Anti-KCTD17 Antibody Titration:
0.2-1 ug/ml; Positive Control: HepG2 cell lysate