

## Product datasheet for **TA338711**

### TRPM8 Rabbit Polyclonal Antibody

#### Product data:

Product Type:	Primary Antibodies
Applications:	IHC, WB
Recommended Dilution:	WB, IHC
Reactivity:	Human
Host:	Rabbit
Isotype:	IgG
Clonality:	Polyclonal
Immunogen:	The immunogen for anti-TRPM8 antibody: synthetic peptide directed towards the N terminal of human TRPM8. Synthetic peptide located within the following region: YILDNNHTHLLLVDNGCHGHPTVEAKLRNQLEKYISERTIQDSNYGGKIP
Formulation:	Liquid. Purified antibody supplied in 1x PBS buffer with 0.09% (w/v) sodium azide and 2% sucrose. <i>Note that this product is shipped as lyophilized powder to China customers.</i>
Concentration:	lot specific
Purification:	Protein A purified
Conjugation:	Unconjugated
Storage:	Store at -20°C as received.
Stability:	Stable for 12 months from date of receipt.
Predicted Protein Size:	128 kDa
Gene Name:	transient receptor potential cation channel subfamily M member 8
Database Link:	<a href="#">NP_076985</a> <a href="#">Entrez Gene 79054 Human</a> <a href="#">Q7Z2W7</a>



[View online »](#)

**Background:**

TRPM8 is the receptor-activated non-selective cation channel involved in detection of sensations such as coolness, by being activated by cold temperature below 25 degrees Celsius. TRPM8 is activated by icilin, eucalyptol, menthol, cold and modulation of intracellular pH. TRPM8 is involved in menthol sensation. TRPM8 is permeable for monovalent cations sodium, potassium, and cesium and divalent cation calcium. Temperature sensing is tightly linked to voltage-dependent gating. TRPM8 was activated upon depolarization, changes in temperature resulting in graded shifts of its voltage-dependent activation curves. The chemical agonists menthol functions as a gating modifier, shifting activation curves towards physiological membrane potentials. Temperature sensitivity arises from a tenfold difference in the activation energies associated with voltage-dependent opening and closing.

**Synonyms:**

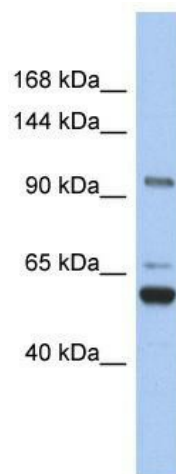
LTRPC6; TRPP8

**Note:**

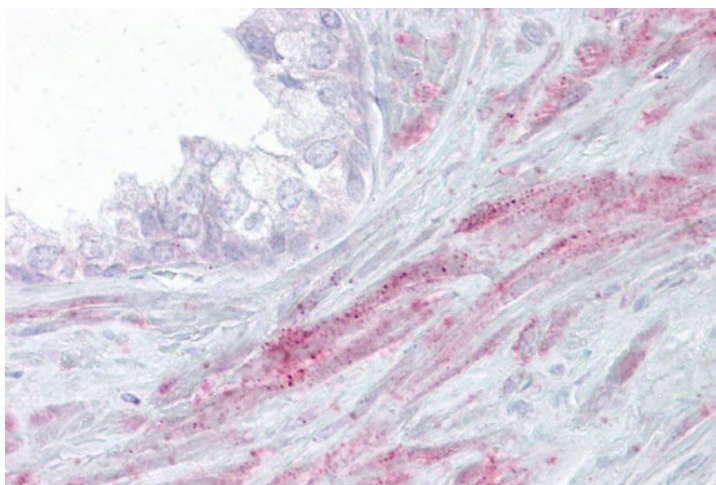
Immunogen Sequence Homology: Dog: 100%; Pig: 100%; Horse: 100%; Human: 100%; Bovine: 100%; Rabbit: 100%; Rat: 93%; Mouse: 93%; Guinea pig: 86%

**Protein Families:**

Druggable Genome, Ion Channels: Transient receptor potential, Transmembrane

**Product images:**

WB Suggested Anti-TRPM8 Antibody Titration:  
0.2-1 ug/ml; ELISA Titer: 1:312500; Positive  
Control: ACHN cell lysate



Immunohistochemistry with Prostate tissue at an antibody concentration of 5 ug/ml using anti-TRPM8 antibody