

Product datasheet for **TA338709**

KCNK15 Rabbit Polyclonal Antibody

Product data:

Product Type:	Primary Antibodies
Applications:	WB
Recommended Dilution:	WB
Reactivity:	Human
Host:	Rabbit
Isotype:	IgG
Clonality:	Polyclonal
Immunogen:	The immunogen for anti-KCNK15 antibody: synthetic peptide directed towards the middle region of human KCNK15. Synthetic peptide located within the following region: ARSVGSASVFCHVHKLERCARDNLGFSPSPGVVRGGQAPRPGARWKS
Formulation:	Liquid. Purified antibody supplied in 1x PBS buffer with 0.09% (w/v) sodium azide and 2% sucrose. <i>Note that this product is shipped as lyophilized powder to China customers.</i>
Concentration:	lot specific
Purification:	Protein A purified
Conjugation:	Unconjugated
Storage:	Store at -20°C as received.
Stability:	Stable for 12 months from date of receipt.
Predicted Protein Size:	36 kDa
Gene Name:	potassium two pore domain channel subfamily K member 15
Database Link:	NP_071753 Entrez Gene 60598 Human Q9H427
Background:	This gene encodes one of the members of the superfamily of potassium channel proteins containing two pore-forming P domains. The product of this gene has not been shown to be a functional channel, however, it may require other non-pore-forming proteins for activity. [provided by RefSeq, Jul 2008]
Synonyms:	dj781B1.1; K2p15.1; KCNK11; KCNK14; KT3.3; TASK-5; TASK5

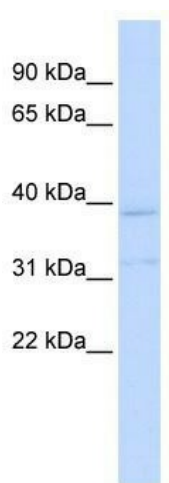


[View online »](#)

Note: Immunogen Sequence Homology: Human: 100%; Dog: 93%; Pig: 92%; Bovine: 83%

Protein Families: Druggable Genome, Ion Channels: Potassium, Transmembrane

Product images:



WB Suggested Anti-KCNK15 Antibody Titration:
0.2-1 ug/ml; ELISA Titer: 1:312500; Positive
Control: Human Muscle